



**NEW  
DESIGN**

### FEATURES

- » Available sizes: unisex XS - 5XL
- » 2 side pockets, 1 breast pocket with ESD symbol
- » Hidden snap-fasteners
- » Cuff with snap-fasteners

### OPTIONAL

- » SHORT SLEEVED VERSION - CODE: **SSL**
- » STANDING COLLAR - CODE: **AGL**
- » COND. ELASTICATED CUFF - CODE: **RAN**
- » WAIST KNITTER - CODE: **OTO**
- » GROUNDING SMOCK - CODE: **GND\***
- \*Grounding smock is available with conductive cuff as well, CODE: **GNDR***

### FABRIC PROPERTIES

- » Static dissipative woven fabric (carbon loaded yarns in 5 mm grid)
- » **Finish:** Crease resists, workwear
- » **Resistance from point to point (Rp):** 10<sup>6</sup> - 10<sup>7</sup> Ohm
- » **Charging time:** < 2 seconds
- » Complies with IEC/TS 61340-4-9:2016 and ANSI/ESD STM2.1:2018, and keeps this compliance after more than 50 industrial washings
- » Developed for industrial washing

#### KK01

- » **Composition:** 74% Polyester, 24% Cotton, 2% Conductive fiber
- » **Fabric Weight:** 125 g/m<sup>2</sup>

#### TH55

- » **Composition:** 63% Polyester 33% Cotton 4% Conductive fiber
- » **Fabric Weight:** 155 g/m<sup>2</sup>

#### CT35

- » **Composition:** 69% Polyester 27% Cotton 4% Conductive fiber
- » **Fabric Weight:** 130 g/m<sup>2</sup>

#### TH65

- » **Composition:** 36% Polyester 60% Cotton 4% Conductive fiber
- » **Fabric Weight:** 160 g/m<sup>2</sup>

#### CR10

- » Clean Room class 10000, ISO 7
- » **Composition:** 98% Polyester 2% Conductive fiber
- » **Fabric Weight:** 115 g/m<sup>2</sup>

#### CR10HI

- » Clean Room class 10000, ISO 7 **High Visibility fabric**
- » **Composition:** 98% Polyester 2% Conductive fiber
- » **Fabric Weight:** 115 g/m<sup>2</sup>

#### KK01 FABRIC



#### TH55 FABRIC



#### CT35 FABRIC



#### TH65 FABRIC



#### CR10 FABRIC



#### CR10HI FABRIC



### ORDERING CODE

**ESL** - **KK01** - **W L**  
style fabric colour size

Certified clothing according to the 2018 ESD standard. It's proved with the following tag.



SIZE CHART (CM)	XS	S	M	L	XL	XXL	3XL	4XL	5XL
<b>Cuff</b>	32	33	34	35	36	36	37	37	38
<b>Sleeve</b>	57	59	63	67	71	71	73	73	74
<b>Length</b>	89	91	93	95	99	101	103	105	107
<b>Chest</b>	90	98	106	114	122	130	136	142	148
<b>Hip</b>	90	98	106	114	122	130	136	142	148
<b>Shoulder</b>	36	39	42	45	48	51	54	57	60

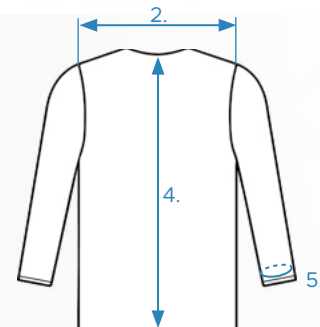
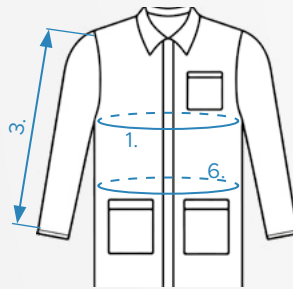
Size tolerance (Before washing): 2%



Embroidered or printed company logo or text available upon request!  
Individual custom made ESD Clothing also available!

### DESCRIPTION

1. Chest
2. Shoulder
3. Sleeve
4. Length
5. Cuff
6. Hip



### WASHING INSTRUCTIONS

Conductive carbon fibres used in ESD fabrics are very sensitive to high temperatures, alkalis, acids, rinses (softeners) and bleaches. Inadequate use may cause damage to carbon fibres and ESD clothing may lose or significantly deteriorate ESD parameters. Therefore, wash ESD clothing very carefully, in each case please follow the instructions:

**KK01, TH55, CT35, TH65, MC24, TS15, TS16, PS21, LY20, WC10, THSS, THSB FABRICS**

- i** In order to preserve the long life of ESD clothings, please use industrial laundries who can provide controlled, documented washing procedures and environment
- i** Wash in cold or not warmer than 40 °C (104 °F) lukewarm water with neutral liquid detergent
- i** Do not use detergents and / or rinse aids that contain bleach and / or chlorine
- i** Bleachers are forbidden
- i** Do not use rinse aids or detergents with a high alkali or high acid content
- i** Do not dry clean
- i** Dry in the open air and / or at a temperature up to 50 °C (120 °F)
- i** Does not require ironing, but if absolutely necessary, iron at a maximum temperature of 110 °C (230 °F) without steaming
- i** Wash all items inside out
- i** Using deodorant can damage the color of the product
- i** When drying clothes outdoors, do not expose them to direct sunlight
- i** Tighten the zippers before each wash



### CR10, CR10HI FABRICS

- i** In order to preserve the long life of ESD clothings, please use industrial laundries who can provide controlled, documented washing procedures and environment
- i** Wash in cold or not warmer than 40 °C (104 °F) lukewarm water with neutral liquid detergent
- i** Do not use detergents and / or rinse aids that contain bleach and / or chlorine
- i** Bleachers are forbidden
- i** Do not use rinse aids or detergents with a high alkali or high acid content
- i** Do not dry clean
- i** Tumble drying is prohibited
- i** Does not require ironing, but if absolutely necessary, iron at a maximum temperature of 110 °C (230 °F) without steaming
- i** Wash all items inside out
- i** Using deodorant can damage the color of the product
- i** When drying clothes outdoors, do not expose them to direct sunlight
- i** Tighten the zippers before each wash



### FL1 FABRICS

- i** In order to preserve the long life of ESD clothings, please use industrial laundries who can provide controlled, documented washing procedures and environment
- i** Wash in cold or not warmer than 40 °C (104 °F) lukewarm water with neutral liquid detergent
- i** Do not use detergents and / or rinse aids that contain bleach and / or chlorine
- i** Bleachers are forbidden
- i** Do not use rinse aids or detergents with a high alkali or high acid content
- i** Do not dry clean
- i** Dry in the open air. Tumble drying is prohibited. After centrifugation, hang dry only
- i** Does not require ironing, but if absolutely necessary, iron at a maximum temperature of 110 °C (230 °F) without steaming
- i** Wash all items inside out
- i** Using deodorant can damage the color of the product
- i** When drying clothes outdoors, do not expose them to direct sunlight
- i** Tighten the zippers before each wash



## WARRANTY

- !** The warranty is strictly valid under controlled and documented industrial laundry conditions, concern the fabric washing cycle as specified in the technical data's.
- !** The warranty is NOT valid if the washing process is made in home environment!
- !** The warranty covers ESD parameters and possible sewing errors according to IEC 61340-4-9:2016 and ANSI/ESD STM2.1:2018 standard issued only!
- !** The warranty does not cover the size and shrinkage differences within the tolerances given at the size charts!
- !** Our clothing products are provided with the „Operating instructions with symbols” according to the MSZ EN ISO 3758:2012 standard.
- !** If the product shows improper tampering (e.g. tread extension or tearing), the complaint can be rejected.