



### FEATURES

- » **Available sizes:** unisex XS – 5XL
- » with coloured inserts
- » With zipper
- » Standing collar
- » ESD symbol on sleeve
- » 2 side pockets
- » Not waterproof, for indoor use

### FABRIC PROPERTIES

- » Static dissipative Knitted fabric (with carbon yarn)
- » **Composition:** 96% Polyester 4% Conductive fiber
- » **Fabric Weight:** 280 g/m<sup>2</sup>
- » **Finish:** Fleece
- » **Resistance from point to point (Rp):** 10<sup>9</sup> - 10<sup>11</sup> Ohm
- » **Charging time:** < 2 seconds
- » Complies with IEC/TS 61340-4-9:2016 and ANSI/ESD STM2.1:2018, and keeps this compliance after more than 40 industrial washings
- » Developed for industrial washing

#### FL1 FABRIC



#### FOR COLOURED INSERTS

#### FL1 FABRIC



### ORDERING CODE

**FBU** - **FL1** - **NB** / **Y** **L**  
style fabric colour coloured insert size

Certified clothing according to the 2018 ESD standard. It's proved with the following tag.





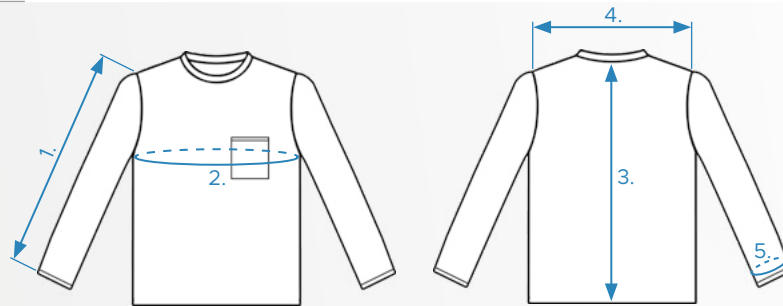
Embroidered or printed company logo or text available upon request!  
Individual custom made ESD Clothing also available!

SIZE CHART (CM)	XS	S	M	L	XL	XXL	3XL	4XL	5XL
Chest	102	106	110	114	118	122	126	130	134
Length	65	68	71	74	77	80	83	86	89
Sleeve	55	57	59	61	63	65	67	67	68
Shoulder	42	43	44	45	46	47	48	49	49

Size tolerance (Before washing): 2%

## DESCRIPTION

1. Sleeve
2. Chest
3. Length
4. Shoulder
5. Cuff



## WASHING INSTRUCTIONS

Conductive carbon fibres used in ESD fabrics are very sensitive to high temperatures, alkalis, acids, rinses (softeners) and bleaches. Inadequate use may cause damage to carbon fibres and ESD clothing may lose or significantly deteriorate ESD parameters. Therefore, wash ESD clothing very carefully, in each case please follow the instructions:

- i** In order to preserve the long life of ESD clothings, please use industrial laundries who can provide controlled, documented washing procedures and environment
- i** Wash in cold or not warmer than 40 °C (104 °F) lukewarm water with neutral liquid detergent
- i** Do not use detergents and / or rinse aids that contain bleach and / or chlorine
- i** Bleachers are forbidden
- i** Do not use rinse aids or detergents with a high alkali or high acid content
- i** Do not dry clean
- i** Dry in the open air. Tumble drying is prohibited. After centrifugation, hang dry only
- i** Does not require ironing, but if absolutely necessary, iron at a maximum temperature of 110 °C (230 °F) without steaming
- i** Wash all items inside out
- i** Using deodorant can damage the color of the product
- i** When drying clothes outdoors, do not expose them to direct sunlight
- i** Tighten the zippers before each wash



## WARRANTY

- !** The warranty is strictly valid under controlled and documented industrial laundry conditions, concern the fabric washing cycle as specified in the technical data's.
- !** The warranty is NOT valid if the washing process is made in home environment!
- !** The warranty covers ESD parameters and possible sewing errors according to IEC 61340-4-9:2016 and ANSI/ESD STM2.1:2018 standard issued only!
- !** The warranty does not cover the size and shrinkage differences within the tolerances given at the size charts!
- !** Our clothing products are provided with the „Operating instructions with symbols” according to the MSZ EN ISO 3758:2012 standard.
- !** Thread extension or tearing should not be the basis for a complaint.
- !** If the product shows improper tampering, the complaint will be rejected.