



ESD GARMENTS 2020



OUR COMPANY'S GOAL:

*We are dedicated to reach our goal to make our own **DLB** brand a globally respected and accepted trademark of our high quality ESD products, like other trademarks of the leading manufacturers (The USA, Germany, Italy, etc.) of the international markets.*

With our Hungarian product development and production our aim to is provide guidance on ESD product's market and with innovations we want to improve the effectiveness of ESD protection. With this activity, we increase the security of electronics production and prevent the loss of electronic products by static discharge and make it safe for use.

Our colleagues can be proud that with their work they can even save lifes: for example to avoid any mistakes in production of car braking electronics or to provide the proper operation of medical diagnostic devices.

We especially proud that our company ensures the livelihood of nearly 100 Hungarian families and we strive with our product and market development to continue to increase D es Tsa Team.





CONTENTS

* The product and fabric colors appearing in the catalog may differ in color due to printing, so we do not take any responsibility. Ask our free fabric catalog! Furthermore, it is for any mistake (technical data, size, etc.), responsibility is not accepted by our company and reserves the right to make changes!

ABOUT OUR COMPANY

D és Tsa Bt. was established in 1996. It is a 100 % Hungarian owned company. Our company is specialized in manufacturing and distributing ESD and Soldering products. In our product range there are more than 25.000 different products. Our self-produced products exist on the market under our own brand name DLB:

- ESD Garments
- ESD Entrance systems and test stations
- ESD Measurement instruments
- ESD Chairs
- ESD Floor mats and table mats

In the partner network of D és Tsa Bt. there are the leading multinational electronics manufacturing corporations, which look on our company as their strategic supplier partner on ESD and Soldering field. Our outstanding results could be thank to our highly professional readiness, flexibility and the high quality standards of our sales and production.

D és Tsa Bt. certified company on the basis of **EN ISO 9001:2008** quality management system.

D és Tsa Bt. provides different ESD services which prove our professionalism and made our position on the market even stronger:

- ESD Professional training
- ESD Audits and Revision
- ESD Certifications
- EPA Measuring of EPA areas
- ESD Laboratory tests
- ESD Consultation

We do all the ESD measurements and product certifications in our own, perfectly equipped ESD laboratories under controlled temperature and humidity.



We produce our ESD Garments according to the ESD standards current at all times: IEC/TS 61340-4-9-2016 and ANSI/ESD STM2.1-2018. We provide a unique quality assurance of the production of the ESD Garments, because this process starts at the arrival of the raw materials which go under a thorough ESD and mechanical testing. Of course, the complete ESD clothing can leave our company only after ESD measurements and conformity.

All of our self-produced ESD Garments have the ESD certification, which will be marking with the following label according to the latest ESD standards:



The quality of our products and the reliability of our company have been successfully able to hold the international markets, which resulting in production capacity of more than 80 % of export sales.

You can meet with our company and with our products on the following International Trade Fairs: **PRODUCTRONICA** (Munchen, Germany), **SMT/HYBRID/PACKAGING** (Nurnberg, Germany), **A+A** (Düsseldorf, Germany).



Based on the feedbacks received from our partners, our slogan has become the following sentence:

„D ÉS TSA BT. OFFERS NOT ONLY PRODUCT BUT COOPERATION AS WELL...“

We hope our products and services can greatly assist your work in the present and in the future.



Dulay Balázs

Dulay Balázs
Owner and Strategy director

ESD REQUIREMENTS

ACCORDING TO IEC 61340-4-9:2016

Common industry description/Use of garment system:	Garment type:	Test procedure:	Specific Resistance values:
Garments with some electrical field suppression properties	Static control garment	Resistance point to point	$< 1,0 \times 10^{11} \Omega$
Garments with a designated groundable point	Groundable static control garment	Resistance point to point and resistance point to groundable point	$< 1,0 \times 10^9 \Omega$
Garment in continuous electrical path with a person; however, not the primary ground path	Groundable static control garment	Resistance point to point and resistance point to groundable point	$< 1,0 \times 10^9 \Omega$
Grounded with dual paths to ground via continuous monitoring equipment that requires two separate paths to ground	Groundable static control garment system (garment in combination with person)	Resistance point to point and resistance point to groundable point	$< 1,0 \times 10^9 \Omega$
		Integrated wrist strap in accordance with IEC 61340-4-6	$< 3,5 \times 10^7 \Omega$
Grounded through a single wire constant monitor system	Groundable static control garment system (garment in combination with person)	Resistance point to point and resistance point to groundable point	$< 1,0 \times 10^9 \Omega$
		Integrated wrist strap in accordance with IEC 61340-4-6	$< 3,5 \times 10^7 \Omega$
Garment used as primary grounding path for personnel	Groundable static control garment system (Garment in combination with person)	Resistance point to point and resistance point to groundable point	$< 1,0 \times 10^9 \Omega$
		Integrated wrist strap in accordance with IEC 61340-4-6	$< 3,5 \times 10^7 \Omega$

Our ESD clothing products meet the above requirements!

In case of groundable static control garment, the additional order code is **GND**







ESD FABRICS



ESD FABRICS

Type	KK01	TH55	CT35	TH65	CR10	WC10	TS15	TS16	PS21	LY20	FL1	THSS	THSB
Material	Woven	Woven	Woven	Woven	Woven (clean room)	Woven (water repellent)	Knitted	Knitted (Pique)	Knitted	Knitted	Polar	Knitted	Knitted (Fluffy)
Polyester (%)	74	63	69	36	98	98	-	-	47	-	97	48	48
Cotton (%)	24	33	27	60	-	-	96	96	50	88	-	48	48
Conductive fibre (%)	2	4	4	4	2	2	4	4	3	4	3	4	4
Lycra (%)	-	-	-	-	-	-	-	-	-	8	-	-	-
Weight (g/m ²)	125	155	130	160	96	120	150	210	210	200	265	280	320
Colour													
Page	14		15		16		17		18		19		20

KK01 FABRIC

FEATURES

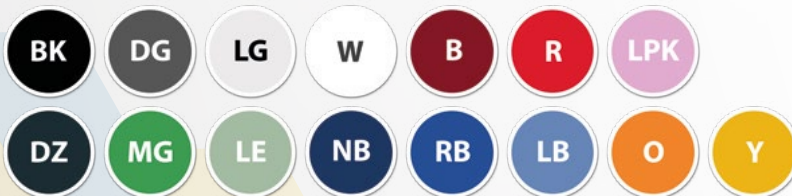
- Static dissipative woven fabric (carbon loaded yarns in 5 mm grid)
- **Composition:** 74% Polyester, 24% Cotton, 2% Conductive fiber
- **Fabric Weight:** 125 g/m²
- **Finish:** Crease resists, workwear
- **Resistance from point to point (Rp):** 10⁶ - 10⁷ Ohm
- **Charging time:** < 2 seconds
- Electrical properties maintained after more than 50 industrial washings according to IEC/TS 61340-4-9-2016 and ANSI/ESD STM2.1-2018
- Complies with IEC/TS 61340-4-9-2016 and ANSI/ESD STM2.1-2018
- Developed for industrial washing

 Machine washable up to 40 °C
Ironing at maximum 110 °C
Do not use acid or alkali
Do not bleach
 Tumble dry at low temperature

Detailed washing instructions and warranty conditions on page 21!

AVAILABLE COLOURS



Black (BK), Dark Gray (DG), Light Gray (LG), White (W), Burgundy (B), Red (R), Light Pink (LPK), Dark Green (DZ), Mint Green (MG), Light Green (LE), Navy Blue (NB), Royal Blue (RB), Light Blue (LB), Orange (O), Yellow (Y)



TH55 FABRIC

FEATURES

- Static dissipative woven fabric (carbon loaded yarns in 5 mm grid)
- **Composition:** 63% Polyester 33% Cotton 4% Conductive fiber
- **Fabric Weight:** 155 g/m²
- **Finish:** Crease resists, workwear
- **Resistance from point to point (Rp):** 10⁶ - 10⁷ Ohm
- **Charging time:** < 2 seconds
- Electrical properties maintained after more than 50 industrial washings according to IEC/TS 61340-4-9-2016 and ANSI/ESD STM2.1-2018
- Complies with IEC/TS 61340-4-9-2016 and ANSI/ESD STM2.1-2018
- Developed for industrial washing

 Machine washable up to 40 °C
Ironing at maximum 110 °C
Do not use acid or alkali
Do not bleach
 Tumble dry at low temperature

Detailed washing instructions and warranty conditions on page 21!

AVAILABLE COLOURS



White (W), Light Blue (LB), Royal Blue (RB)



CT35 FABRIC

FEATURES

- Static dissipative woven fabric (carbon loaded yarns in 5 mm grid)
- **Composition:** 69% Polyester 27% Cotton 4% Conductive fiber
- **Fabric Weight:** 130 g/m²
- **Finish:** Crease resists, workwear
- **Resistance from point to point (Rp):** 10⁶ - 10⁷ Ohm
- **Charging time:** < 2 seconds
- Electrical properties maintained after more than 50 industrial washings according to IEC/TS 61340-4-9-2016 and ANSI/ESD STM2.1-2018
- Complies with IEC/TS 61340-4-9-2016 and ANSI/ESD STM2.1-2018
- Developed for industrial washing

 Machine washable up to 40 °C
 Ironing at maximum 110 °C
 Do not use acid or alkali
 Do not bleach
 Tumble dry at low temperature

Detailed washing instructions and warranty conditions on page 21!

AVAILABLE COLOURS



White (W)

W

TH65 FABRIC

FEATURES

- Static dissipative woven fabric (carbon loaded yarns in 5 mm grid)
- **Composition:** 36% Polyester 60% Cotton 4% Conductive fiber
- **Fabric Weight:** 160 g/m²
- **Finish:** Crease resists, workwear
- **Resistance from point to point (Rp):** 10⁶ - 10⁷ Ohm
- **Charging time:** < 2 seconds
- Electrical properties maintained after more than 50 industrial washings according to IEC/TS 61340-4-9-2016 and ANSI/ESD STM2.1-2018
- Complies with IEC/TS 61340-4-9-2016 and ANSI/ESD STM2.1-2018
- Developed for industrial washing

 Machine washable up to 40 °C
 Ironing at maximum 110 °C
 Do not use acid or alkali
 Do not bleach
 Tumble dry at low temperature

Detailed washing instructions and warranty conditions on page 21!

AVAILABLE COLOURS

White (W)

W

CR10 FABRIC

FEATURES

- Static dissipative woven fabric (carbon loaded yarns in 5 mm grid)
- For Clean Room class 10-100 (ISO 4-5)
- **Composition:** 98% Polyester 2% Conductive fiber
- **Fabric Weight:** 96 g/m²
- **Finish:** Crease resists, workwear
- **Resistance from point to point (Rp):** 10⁶ - 10⁷ Ohm
- **Charging time:** < 2 seconds
- Electrical properties maintained after more than 50 industrial washings according to IEC/TS 61340-4-9-2016 and ANSI/ESD STM2.1-2018
- Complies with IEC/TS 61340-4-9-2016 and ANSI/ESD STM2.1-2018
- Developed for industrial washing

- ! Machine washable up to 40 °C
- ! Ironing at maximum 110 °C
- ! Do not use acid or alkali
- ! Do not bleach
- ! Tumble dry at low temperature

Detailed washing instructions and warranty conditions on page 21!

AVAILABLE COLOURS

White (W), Light Blue (LB)

W

LB

WC10 FABRIC

FEATURES

- Static dissipative woven fabric (carbon loaded yarns in 5 mm grid)
- Water repellent material, for outdoor use
- For Clean Room also, class 1000
- **Composition:** 98% Polyester 2% Conductive fiber
- **Fabric Weight:** 120 g/m²
- **Finish:** Crease resists, workwear
- **Resistance from point to point (Rp):** 10⁶ - 10⁷ Ohm
- **Charging time:** < 2 seconds
- Electrical properties maintained after more than 50 industrial washings according to IEC/TS 61340-4-9-2016 and ANSI/ESD STM2.1-2018
- Complies with IEC/TS 61340-4-9-2016 and ANSI/ESD STM2.1-2018
- Developed for industrial washing

- ! Machine washable up to 40 °C
- ! Ironing at maximum 110 °C
- ! Do not use acid or alkali
- ! Do not bleach
- ! Tumble dry at low temperature

Detailed washing instructions and warranty conditions on page 21!

AVAILABLE COLOURS



Navy Blue (NB)

NB

TS15 FABRIC

FEATURES

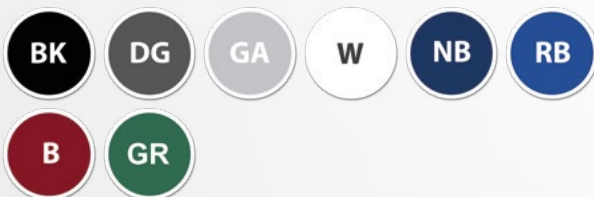
- Static dissipative knitted fabric (with carbon yarn)
- **Composition:** 96% Cotton 4% Conductive fiber
- **Fabric Weight:** 150 g/m²
- **Finish:** Crease resist, workwear
- **Resistance from point to point (Rp):** 10⁶ - 10⁷ Ohm
- **Charging time:** < 2 seconds
- Electrical properties maintained after more than 40 industrial washings according to IEC/TS 61340-4-9-2016 and ANSI/ESD STM2.1-2018
- Complies with IEC/TS 61340-4-9-2016 and ANSI/ESD STM2.1-2018
- Developed for industrial washing

 Machine washable up to 40 °C
Ironing at maximum 110 °C
Do not use acid or alkali
Do not bleach
 Tumble dry at low temperature

Detailed washing instructions and warranty conditions on page 21!

AVAILABLE COLOURS



Black (BK), Dark Gray (DG), Gray (GA), White (W), Navy Blue (NB), Royal Blue (RB), Burgundy (B), Dark Green (GR)



TS16 FABRIC

FEATURES

- Static dissipative knitted **PIQUE** fabric (with carbon yarn)
- **Composition:** 96% Cotton 4% Conductive fiber
- **Fabric Weight:** 210 g/m²
- **Finish:** Crease resists, workwear
- **Resistance from point to point (Rp):** 10⁶ - 10⁷ Ohm
- **Charging time:** < 2 seconds
- Electrical properties maintained after more than 40 industrial washings according to IEC/TS 61340-4-9-2016 and ANSI/ESD STM2.1-2018
- Complies with IEC/TS 61340-4-9-2016 and ANSI/ESD STM2.1-2018
- Developed for industrial washing

 Machine washable up to 40 °C
Ironing at maximum 110 °C
Do not use acid or alkali
Do not bleach
 Tumble dry at low temperature

Detailed washing instructions and warranty conditions on page 21!

AVAILABLE COLOURS



White (W), Navy blue (NB), Black (BK)



PS21 FABRIC

FEATURES

- Static dissipative knitted fabric (with carbon yarn)
- **Composition:** 47% Polyester 50% Cotton 3% Conductive fiber
- **Fabric Weight:** 210 g/m²
- **Finish:** Crease resists, workwear
- **Resistance from point to point (Rp):** 10⁶ - 10⁷ Ohm
- **Charging time:** < 2 seconds
- Electrical properties maintained after more than 40 industrial washings according to IEC/TS 61340-4-9-2016 and ANSI/ESD STM2.1-2018
- Complies with IEC/TS 61340-4-9-2016 and ANSI/ESD STM2.1-2018
- Developed for industrial washing

 Machine washable up to 40 °C
 Ironing at maximum 110 °C
 Do not use acid or alkali
 Do not bleach
 Tumble dry at low temperature

Detailed washing instructions and warranty conditions on page 21!

AVAILABLE COLOURS



Black (BK), Dark Gray (DG), Gray (GA), White (W), Navy blue (NB), Royal Blue (RB)



LY20 FABRIC

FEATURES

- Static dissipative knitted fabric (with carbon yarn)
- **Composition:** 88% Cotton 8% Lycra 4% Conductive fiber
- **Fabric Weight:** 200 g/m²
- **Finish:** Crease resists, workwear
- **Resistance from point to point (Rp):** 10⁶ - 10⁷ Ohm
- **Charging time:** < 2 seconds
- Electrical properties maintained after more than 40 industrial washings according to IEC/TS 61340-4-9-2016 and ANSI/ESD STM2.1-2018
- Complies with IEC/TS 61340-4-9-2016 and ANSI/ESD STM2.1-2018
- Developed for industrial washing

 Machine washable up to 40 °C
 Ironing at maximum 110 °C
 Do not use acid or alkali
 Do not bleach
 Tumble dry at low temperature

Detailed washing instructions and warranty conditions on page 21!

AVAILABLE COLOURS



Black (BK)



FL1 FABRIC

FEATURES

- **Composition:** 97% polyester 3% carbon fiber
- **Fabric Weight:** 265 g/m²
- Resistivity sleeve to sleeve 2×10^9 Ohm
- Complies with IEC/TS 61340-4-9-2016 and ANSI/ESD STM2.1-2018
- Developed for industrial washing

 Machine washable up to 40 °C
Ironing at maximum 110 °C
Do not use acid or alkali
Do not bleach
 Tumble dry at low temperature

Detailed washing instructions and warranty conditions on page 21!

AVAILABLE COLOURS



Navy Blue (NB) , Light Gray (LG)



THSS FABRIC

FEATURES

- Static dissipative knitted fabric (with carbon yarn)
- **Composition:** 48% Polyester 48% Cotton 4% Conductive fiber
- **Fabric Weight:** 280 g/m²
- **Finish:** Crease resists, workwear
- **Resistance from point to point (Rp):** $10^6 - 10^7$ Ohm
- **Charging time:** < 2 seconds
- Electrical properties maintained after more than 40 industrial washings according to IEC/TS 61340-4-9-2016 and ANSI/ESD STM2.1-2018
- Complies with IEC/TS 61340-4-9-2016 and ANSI/ESD STM2.1-2018
- Developed for industrial washing

 Machine washable up to 40 °C
Ironing at maximum 110 °C
Do not use acid or alkali
Do not bleach
 Tumble dry at low temperature

Detailed washing instructions and warranty conditions on page 21!

AVAILABLE COLOURS

Black (BK), Navy blue (NB), Navy blue (NB)



THSB FABRIC

FEATURES

- Static dissipative knitted fabric (with carbon yard)
- Fluffy inner side
- **Composition:** 48% Polyester 48% Cotton 4% Conductive fiber
- **Fabric Weight:** 320 g/m²
- **Finish:** Crease resists, workwear
- **Resistance from point to point (Rp):** 10⁶ - 10⁷ Ohm
- **Charging time:** < 2 seconds
- Electrical properties maintained after more than 40 industrial washings according to IEC/TS 61340-4-9-2016 and ANSI/ESD STM2.1-2018
- Complies with IEC/TS 61340-4-9-2016 and ANSI/ESD STM2.1-2018
- Developed for industrial washing

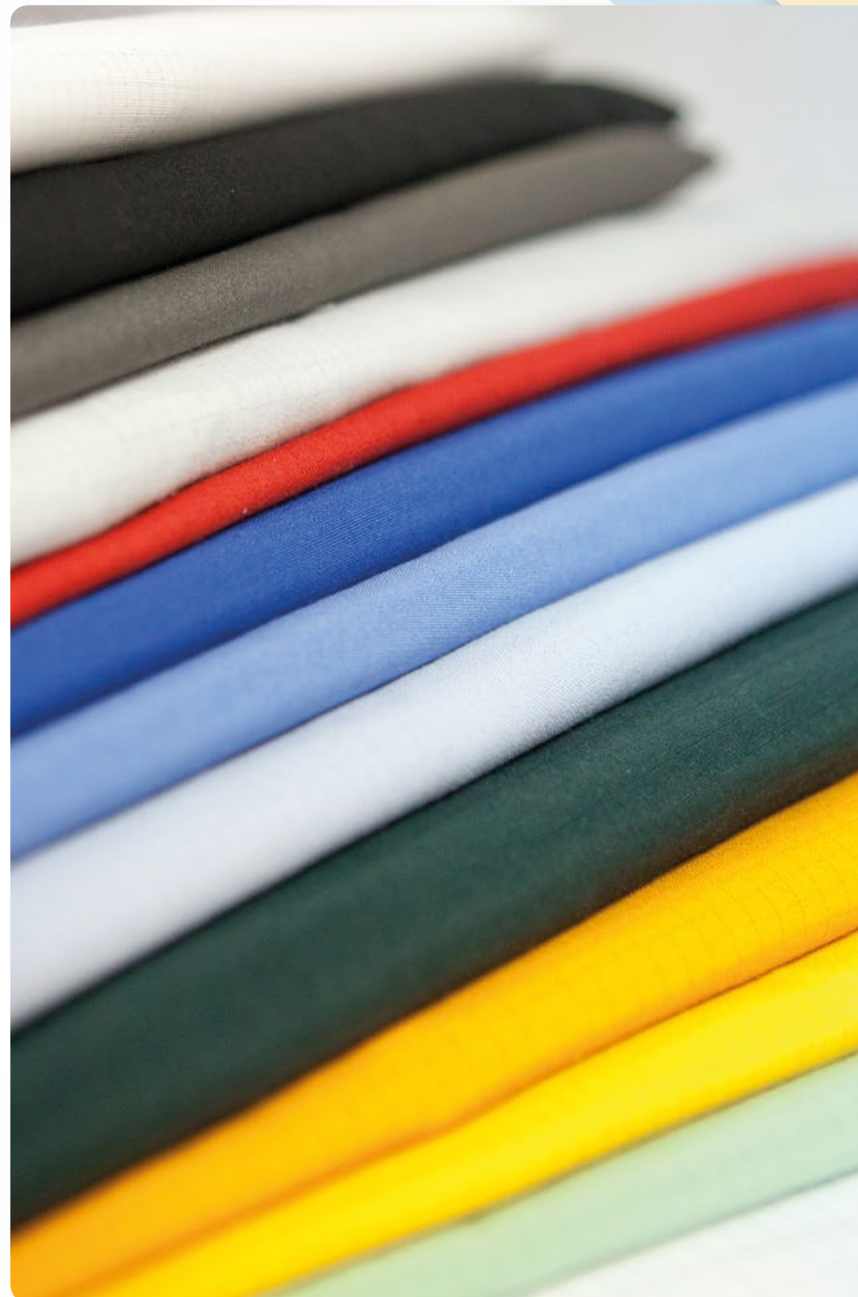
- ! Machine washable up to 40 °C
- ! Ironing at maximum 110 °C
- ! Do not use acid or alkali
- ! Do not bleach
- ! Tumble dry at low temperature

Detailed washing instructions and warranty conditions on page 21!

AVAILABLE COLOURS

Black (BK)

BK



WASHING INSTRUCTIONS

Conductive carbon fibers used in ESD fabrics are very sensitive to high temperatures, alkalis, acids, rinses (softeners) and bleaches. Inadequate use may cause damage to carbon fibers and ESD clothing may lose or significantly deteriorate ESD parameters. Therefore, wash ESD clothing very carefully, in each case please follow the instructions:

- i** In order to preserve the long life of ESD clothings, please use industrial laundries who can provide controlled, documented washing procedures and environment!
- i** Washing in cold or not warmer than 40 °C (104 °F) lukewarm water with neutral liquid detergent!
- i** Do not use detergent containing bleach and fabric softener ingredient containing chlorine!
- i** Bleachers are forbidden! Use of alkalis, acids or fabric softeners is prohibited!
- i** Do not dry clean!
- i** Drying in the open air and / or at a temperature up to 50 °C (120 °F) or less!
- i** The ESD clothing does not require ironing but if absolutely necessary in that case the maximum temperature is 110 °C (230 °F) or lower!



WARRANTY

- !** The warranty is strictly valid under controlled and documented industrial laundry conditions, concern the fabric washing cycle as specified in the technical data's.
- !** The warranty is NOT valid if the washing process is made in a home environment!
- !** The warranty covers ESD parameters and possible sewing errors according to IEC/TS 61340-4-9-2016 and ANSI/ESD STM2.1-2018 standard issued only!
- !** The warranty is not cover the size and shrinkage differences within the tolerances given on the size cart!



STANDARD LINE



ESS

... **24**

ESS ESD SMOCK
1/2 LENGTH



EFS

... **25**

EFS ESD SMOCK
1/2 LENGTH



ESL

... **26**

ESL ESD SMOCK
2/3 LENGTH



EFL

... **27**

EFL ESD SMOCK
2/3 LENGTH



ESX

... **28**

ESX ESD SMOCK
1/3 LENGTH



EFX

... **29**

EFX ESD SMOCK
1/3 LENGTH



ET

... **30**

ET ESD MALE TROUSERS



ETF

... **31**

ETF ESD FEMALE TROUSERS



OT

... **32**

OT ESD TROUSERS WITH BINDLES



OJ

... **33**

OJ ESD JACKET



OLL

... **34**

OLL ESD HOODIED COVERALL



HIV

... **35**

HIV ESD HIGH VISIBILITY VEST



BB

... **36**

BB ESD BASEBALL CAP



BP

... **37**

BP ESD CAP WITH NET

ESS ESD SMOCK

1/2 LENGTH

FEATURES

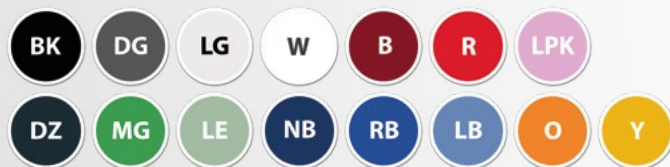
- Available sizes: unisex XS - 5XL
- 2 side pockets, 1 breast pocket with ESD symbol
- Hidden snap-fasteners
- Cuff with snap-fasteners

Embroidered or printed company logo or text available upon request!

Individual custom made ESD Clothing also available!

AVAILABLE FABRICS AND COLOURS

KK01 FABRIC



ORDERING CODE

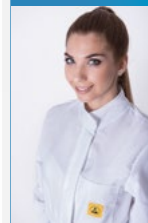
ESS - KK01 - W L
 style fabric colour size



Certified clothing according to the 2018 ESD standard. It's proved with the following tag.

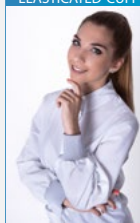
OPTIONAL

STANDING COLLAR



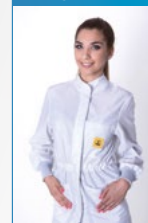
CODE: **AGL**

CONDUCTIVE ELASTICATED CUFF



CODE: **RAN**

WAIST KNITTER



CODE: **OTO**

GROUNDING SMOCK - CODE: **GND**



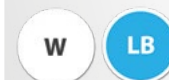
TH55 FABRIC



TH65 FABRIC



CR10 FABRIC



CT35 FABRIC



SIZE CHART (cm)

ESS ESD Smock	XS	S	M	L	XL	XXL	3XL	4XL	5XL
Cuff	32	33	34	35	36	36	37	37	38
Sleeve	51	53	57	61	65	65	67	67	68
Length	78	80	82	84	88	90	92	94	96
Chest	90	98	106	114	122	130	136	142	148
Hip	90	98	106	114	122	130	136	142	148
Shoulder	40	43	46	49	52	55	58	61	65
Shoulder outline	56	58	60	62	64	66	68	70	72

Size tolerance (Before washing): 2%

EFS ESD SMOCK

1/2 LENGTH

FEATURES

- Available sizes: female XS - 5XL
- 2 side pockets, 1 breast pocket with ESD symbol
- Hidden snap-fasteners
- Cuff with snap-fasteners

Embroidered or printed company logo or text available upon request!

Individual custom made ESD Clothing also available!

AVAILABLE FABRICS AND COLOURS

KK01 FABRIC



ORDERING CODE

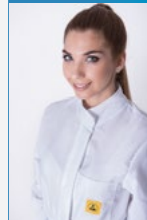
EFS - KK01 - RB L
 style fabric colour size



Certified clothing according to the 2018 ESD standard. It's proved with the following tag.

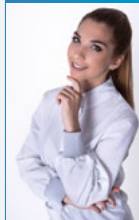
OPTIONAL

STANDING COLLAR



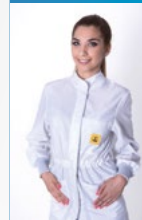
CODE: **AGL**

CONDUCTIVE ELASTICATED CUFF



CODE: **RAN**

WAIST KNITTER



CODE: **OTO**

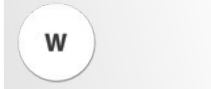
GROUNDING SMOCK - CODE: **GND**



TH55 FABRIC



TH65 FABRIC



CR10 FABRIC



CT35 FABRIC



SIZE CHART (cm)

EFS ESD Smock	XS	S	M	L	XL	XXL	3XL	4XL	5XL
Cuff	32	33	34	35	36	36	37	37	38
Sleeve	51	53	57	61	65	65	67	67	68
Length	78	80	82	84	88	90	92	94	96
Chest	90	98	106	114	122	130	136	142	148
Hip	90	98	106	114	122	130	136	142	148
Shoulder	40	43	46	49	52	55	58	61	65
Shoulder outline	56	58	60	62	64	66	68	70	72

Size tolerance (Before washing): 2%



ESL ESD SMOCK

2/3 LENGTH

FEATURES

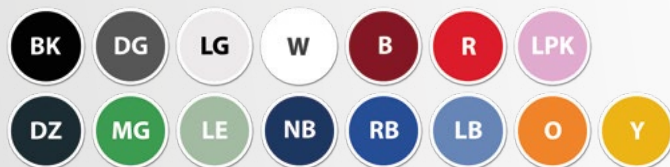
- Available sizes: unisex XS - 5XL
- 2 side pockets, 1 breast pocket with ESD symbol
- Hidden snap-fasteners
- Cuff with snap-fasteners

Embroidered or printed company logo or text available upon request!

Individual custom made ESD Clothing also available!

AVAILABLE FABRICS AND COLOURS

KK01 FABRIC



ORDERING CODE

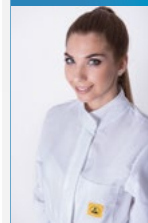
ESL - **KK01** - **W** **L**
 style fabric colour size



Certified clothing according to the 2018 ESD standard. It's proved with the following tag.

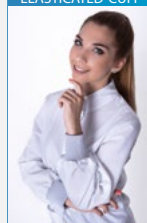
OPTIONAL

STANDING COLLAR



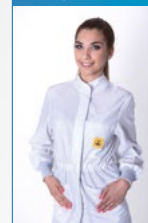
CODE: **AGL**

CONDUCTIVE ELASTICATED CUFF



CODE: **RAN**

WAIST KNITTER



CODE: **OTO**

GROUNDING SMOCK - CODE: **GND**



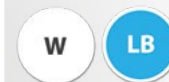
TH55 FABRIC



TH65 FABRIC



CR10 FABRIC



CT35 FABRIC



SIZE CHART (cm)

ESL ESD Smock	XS	S	M	L	XL	XXL	3XL	4XL	5XL
Cuff	32	33	34	35	36	36	37	37	38
Sleeve	51	53	57	61	65	65	67	67	68
Length	89	91	93	95	99	101	103	105	107
Chest	90	98	106	114	122	130	136	142	148
Hip	90	98	106	114	122	130	136	142	148
Shoulder	40	43	46	49	52	55	58	61	65
Shoulder outline	56	58	60	62	64	66	68	70	72

Size tolerance (Before washing): 2%

EFL ESD SMOCK

2/3 LENGTH

FEATURES

- Available sizes: female XS - 5XL
- 2 side pockets, 1 breast pocket with ESD symbol
- Hidden snap-fasteners
- Cuff with snap-fasteners

Embroidered or printed company logo or text available upon request!

Individual custom made ESD Clothing also available!

AVAILABLE FABRICS AND COLOURS

KK01 FABRIC



ORDERING CODE

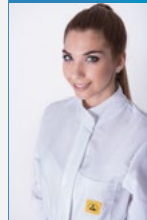
EFL - **KK01** - **RB L**
 style fabric colour size



Certified clothing according to the 2018 ESD standard. It's proved with the following tag.

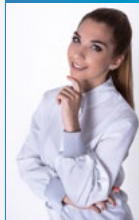
OPTIONAL

STANDING COLLAR



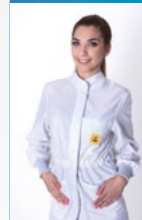
CODE: **AGL**

CONDUCTIVE ELASTICATED CUFF



CODE: **RAN**

WAIST KNITTER



CODE: **OTO**

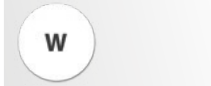
GROUNDING SMOCK - CODE: **GND**



TH55 FABRIC



TH65 FABRIC



CR10 FABRIC



CT35 FABRIC



SIZE CHART (cm)

EFL ESD Smock	XS	S	M	L	XL	XXL	3XL	4XL	5XL
Cuff	32	33	34	35	36	36	37	37	38
Sleeve	51	53	57	61	65	65	67	67	68
Length	89	91	93	95	99	101	103	105	107
Chest	90	98	106	114	122	130	136	142	148
Hip	90	98	106	114	122	130	136	142	148
Shoulder	40	43	46	49	52	55	58	61	65
Shoulder outline	56	58	60	62	64	66	68	70	72

Size tolerance (Before washing): 2%



ESX ESD SMOCK

1/3 LENGTH

FEATURES

- Available sizes: unisex XS - 5XL
- 2 side pockets, 1 breast pocket with ESD symbol
- Hidden snap-fasteners
- Cuff with snap-fasteners

Embroidered or printed company logo or text available upon request!

Individual custom made ESD Clothing also available!

AVAILABLE FABRICS AND COLOURS

KK01 FABRIC



ORDERING CODE

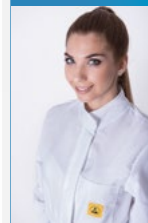
ESX - KK01 - W L
style fabric colour size



Certified clothing according to the 2018 ESD standard. It's proved with the following tag.

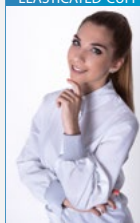
OPTIONAL

STANDING COLLAR



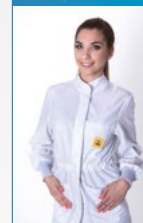
CODE: **AGL**

CONDUCTIVE ELASTICATED CUFF



CODE: **RAN**

WAIST KNITTER



CODE: **OTO**

GROUNDING SMOCK - CODE: **GND**



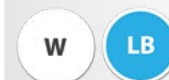
TH55 FABRIC



TH65 FABRIC



CR10 FABRIC



CT35 FABRIC



SIZE CHART (cm)

ESX ESD Smock	XS	S	M	L	XL	XXL	3XL	4XL	5XL
Cuff	32	33	34	35	36	36	37	37	38
Sleeve	51	53	57	61	65	65	67	67	68
Length	58	60	62	64	68	70	72	74	76
Chest	90	98	106	114	122	130	136	142	148
Hip	90	98	106	114	122	130	136	142	148
Shoulder	40	43	46	49	52	55	58	61	65
Shoulder outline	56	58	60	62	64	66	68	70	72

Size tolerance (Before washing): 2%

EFX ESD SMOCK

1/3 LENGTH

FEATURES

- Available sizes: female XS - 5XL
- 2 side pockets, 1 breast pocket with ESD symbol
- Hidden snap-fasteners
- Cuff with snap-fasteners

Embroidered or printed company logo or text available upon request!

Individual custom made ESD Clothing also available!

AVAILABLE FABRICS AND COLOURS

KK01 FABRIC



ORDERING CODE

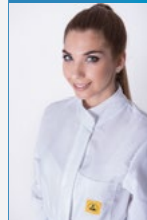
EFX - **KK01** - **RB** **L**
 style fabric colour size



Certified clothing according to the 2018 ESD standard. It's proved with the following tag.

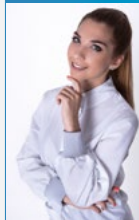
OPTIONAL

STANDING COLLAR



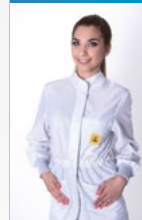
CODE: **AGL**

CONDUCTIVE ELASTICATED CUFF



CODE: **RAN**

WAIST KNITTER



CODE: **OTO**

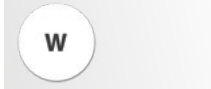
GROUNDING SMOCK - CODE: **GND**



TH55 FABRIC



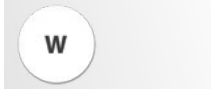
TH65 FABRIC



CR10 FABRIC



CT35 FABRIC



SIZE CHART (cm)

EFX ESD Smock	XS	S	M	L	XL	XXL	3XL	4XL	5XL
Cuff	32	33	34	35	36	36	37	37	38
Sleeve	51	53	57	61	65	65	67	67	68
Length	58	60	62	64	68	70	72	74	76
Chest	90	98	106	114	122	130	136	142	148
Hip	90	98	106	114	122	130	136	142	148
Shoulder	40	43	46	49	52	55	58	61	65
Shoulder outline	56	58	60	62	64	66	68	70	72

Size tolerance (Before washing): 2%



ET ESD MALE TROUSERS

FEATURES

- Straight style
- Available sizes: Male XS - 5XL
- 2 side pockets, 1 hip pocket with ESD symbol
- Rubberized waist with snap-fastener

Embroidered or printed company logo or text available upon request!

Individual custom made ESD Clothing also available!

AVAILABLE FABRICS AND COLOURS

KK01 FABRIC



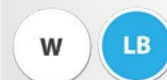
TH55 FABRIC



TH65 FABRIC



CR10 FABRIC



CT35 FABRIC



ORDERING CODE

ET - TH55 - RB L
style fabric colour size



Certified clothing according to the 2018 ESD standard. It's proved with the following tag.

SIZE CHART (cm)

ET ESD Trousers	XS	S	M	L	XL	XXL	3XL	4XL	5XL
Length external	102	104	106	108	110	112	114	116	118
Hip	98	102	107	111	115	119	123	128	132

Size tolerance (Before washing): 2%

ETF ESD FEMALE TROUSERS

FEATURES

- Straight style
- Available sizes: female XS - 5XL
- 2 side pockets, 1 hip pocket with ESD symbol
- Rubberized waist with snap-fastener

Embroidered or printed company logo or text available upon request!

Individual custom made ESD Clothing also available!

AVAILABLE FABRICS AND COLOURS

KK01 FABRIC



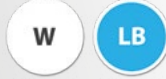
TH55 FABRIC



TH65 FABRIC



CR10 FABRIC



CT35 FABRIC



ORDERING CODE

ETF - TH55 - W L
style fabric colour size



Certified clothing according to the 2018 ESD standard. It's proved with the following tag.



SIZE CHART (cm)

ETF ESD Trousers	XS	S	M	L	XL	XXL	3XL	4XL	5XL
Length external	102	104	106	108	110	112	114	116	118
Hip	84	90	96	102	108	114	120	126	132

Size tolerance (Before washing): 2%

OT ESD TROUSERS WITH BRIDLES

FEATURES

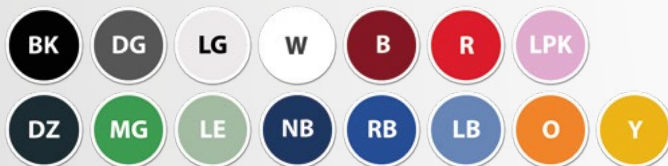
- Available sizes: unisex XS - 5XL
- 2 side pockets, 1 breast pocket with ESD symbol
- 2 side pocket on leg
- 2 quick release buckles

Embroidered or printed company logo or text available upon request!

Individual custom made ESD Clothing also available!

AVAILABLE FABRICS AND COLOURS

KK01 FABRIC



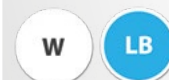
TH55 FABRIC



TH65 FABRIC



CR10 FABRIC



CT35 FABRIC



ORDERING CODE

OT - TH55 - RB L
 style fabric colour size



Certified clothing according to the 2018 ESD standard. It's proved with the following tag.

SIZE CHART (cm)

OT ESD Trousers with bridles	XS	S	M	L	XL	XXL	3XL	4XL	5XL
Length external	102	104	106	108	110	112	114	116	118
Hip	98	102	107	111	115	119	123	128	132

Size tolerance (Before washing): 2%



OJ ESD JACKET

FEATURES

- Available sizes: unisex XS - 5XL
- 2 side pockets, 2 breast pockets
- ESD logo on breast pocket
- Hidden zipper
- Rubberized cuff

Embroidered or printed company logo or text available upon request!

Individual custom made ESD Clothing also available!

AVAILABLE FABRICS AND COLOURS

KK01 FABRIC



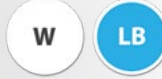
TH55 FABRIC



TH65 FABRIC



CR10 FABRIC



CT35 FABRIC



ORDERING CODE

OJ - TH55 - RB L
style fabric colour size



Certified clothing according to the 2018 ESD standard. It's proved with the following tag.

SIZE CHART (cm)

OJ ESD Jacket	XS	S	M	L	XL	XXL	3XL	4XL	5XL
Sleeve	61	63	67	71	75	76	77	77	78
Length	63	65	67	69	71	73	75	76	77
Chest	90	98	106	114	122	130	136	142	148
Shoulder	40	43	46	49	52	55	58	61	65
Shoulder outline	56	58	60	62	64	66	68	70	72

Size tolerance (Before washing): 2%



OLL ESD HOODIED COVERALL

FEATURES

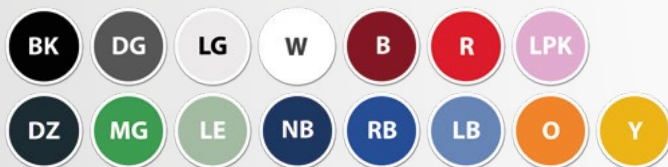
- Available sizes: unisex XS - 5XL
- ESD symbol on chest
- Conductive elasticated cuff
- Hidden zipper
- Adjustable legs with snap-fastener

Embroidered or printed company logo or text available upon request!

Individual custom made ESD Clothing also available!

AVAILABLE FABRICS AND COLOURS

KK01 FABRIC



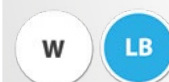
TH55 FABRIC



TH65 FABRIC



CR10 FABRIC



CT35 FABRIC



ORDERING CODE

OLL - CR10 - W L
 style fabric colour size



Certified clothing according to the 2018 ESD standard. It's proved with the following tag.

SIZE CHART (cm)

OLL ESD Hoodied coverall	XS	S	M	L	XL	XXL	3XL	4XL	5XL
Length external from waist	104	106	108	110	112	114	116	118	120
Length from neck to waist	43	45	47	48	50	52	54	56	58
Sleeve	51	53	57	61	65	65	67	67	68
Chest	90	98	106	114	122	130	136	142	148
Shoulder	40	43	46	49	52	55	58	61	65

Size tolerance (Before washing): 2%



HIV ESD HIGH VISIBILITY VEST

FEATURES

- Available sizes: Unisex S-5XL
- With reflective stripes
- ESD symbol on chest
- Hidden snap-fasteners

Embroidered or printed company logo or text available upon request!

Individual custom made ESD Clothing also available!

AVAILABLE FABRICS AND COLOURS

KK01 FABRIC



ORDERING CODE

HIV - **KK01** - **Y** **L**
style fabric colour size



Certified clothing according to the 2018 ESD standard. It's proved with the following tag.

SIZE CHART (cm)

HIV ESD High Visibility vest	S	M	L	XL	XXL	3XL	4XL	5XL
Chest	114	118	122	126	130	134	138	142
Length	61	63	65	67	69	71	73	75

Size tolerance (Before washing): 2%



BB ESD BASEBALL CAP

FEATURES

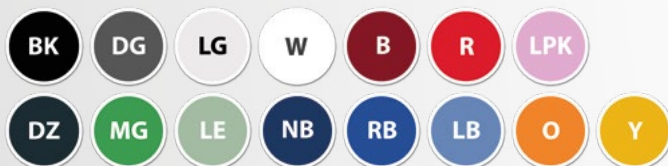
- Sun visor
- Available sizes: Unisex, one size
- With ESD Symbol
- Rubberized back

Embroidered or printed company logo or text available upon request!

Individual custom made ESD Clothing also available!

AVAILABLE FABRICS AND COLOURS

KK01 FABRIC



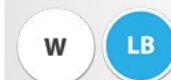
TH55 FABRIC



TH65 FABRIC



CR10 FABRIC



CT35 FABRIC



ORDERING CODE

BB - TH55 - W
 style fabric colour



Certified clothing according to the 2018 ESD standard. It's proved with the following tag.

BP ESD CAP WITH NET

FEATURES

- Breathable, net on the top of the cap
- Available sizes: Unisex, one size
- With ESD Symbol
- Plastic size adjuster on the back

Embroidered or printed company logo or text available upon request!

Individual custom made ESD Clothing also available!

AVAILABLE FABRICS AND COLOURS

KK01 FABRIC



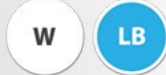
TH55 FABRIC



TH65 FABRIC



CR10 FABRIC



CT35 FABRIC



ORDERING CODE

BP - TH55 - LB
 style fabric colour



Certified clothing according to the 2018 ESD standard. It's proved with the following tag.





PREMIUM **LINE**



PF1

... 40

PF1 ESD PREMIUM SMOCK
2/3 LENGTH



PF2

... 42

PF2 ESD PREMIUM SMOCK
2/3 LENGTH



PF3

... 44

PF3 ESD PREMIUM SMOCK
2/3 LENGTH



PS1

... 41

PS1 ESD PREMIUM SMOCK
2/3 LENGTH



PS2

... 43

PS2 ESD PREMIUM SMOCK
2/3 LENGTH



PS3

... 45

PS3 ESD PREMIUM SMOCK
2/3 LENGTH

PF1 ESD PREMIUM SMOCK

2/3 LENGTH

DESIGNED BY MS. *Gáspár Zsófia*

FEATURES

- Available sizes: female XS - 5XL
- 2 side pockets
- Hidden snap-fasteners
- Cuff with snap-fasteners

Embroidered or printed company logo or text available upon request!

Individual custom made ESD Clothing also available!

AVAILABLE FABRICS AND COLOURS

KK01 FABRIC



TH55 FABRIC



ORDERING CODE

PF1 - KK01 - Y - DG L
 style fabric colour1 colour2 size



Certified clothing according to the 2018 ESD standard. It's proved with the following tag.

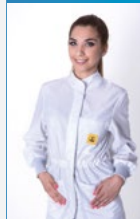
OPTIONAL

CONDUCTIVE ELASTICATED CUFF



CODE: **RAN**

WAIST KNITTER



CODE: **OTO**

GROUNDING SMOCK



CODE: **GND**

CHOOSE THE MOST MATCHING COLOUR COMBINATION OF YOUR COMPANY!



SIZE CHART (cm)

PF1 ESD Premium smock	XS	S	M	L	XL	XXL	3XL	4XL	5XL
Cuff	32	33	34	35	36	36	37	37	38
Sleeve	51	53	57	61	65	65	67	67	68
Length	89	91	93	95	99	101	103	105	107
Chest	90	98	106	114	122	130	136	142	148
Hip	90	98	106	114	122	130	136	142	148
Shoulder	40	43	46	49	52	55	58	61	65
Shoulder outline	56	58	60	62	64	66	68	70	72

Size tolerance (Before washing): 2%

PS1 ESD PREMIUM SMOCK

2/3 LENGTH

DESIGNED BY Ms. *Gáspár Zsófia*

FEATURES

- Available sizes: Male XS - 5XL
- 2 side pockets, 1 hidden breast pocket
- Hidden snap-fasteners
- Cuff with snap-fasteners

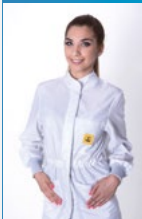
OPTIONAL

CONDUCTIVE
ELASTICATED CUFF



CODE: **RAN**

WAIST KNITTER



CODE: **OTO**

GROUNDING SMOCK



CODE: **GND**

Embroidered or printed company logo or text available upon request!

Individual custom made ESD Clothing also available!

CHOOSE THE MOST MATCHING COLOUR COMBINATION OF YOUR COMPANY!

AVAILABLE FABRICS AND COLOURS

KK01 FABRIC



TH55 FABRIC



ORDERING CODE

PS1 - **KK01** - **Y** - **DG L**
style fabric colour1 colour2 size

SIZE CHART (cm)

PS1 ESD Premium smock	XS	S	M	L	XL	XXL	3XL	4XL	5XL
Cuff	32	33	34	35	36	36	37	37	38
Sleeve	51	53	57	61	65	65	67	67	68
Length	89	91	93	95	99	101	103	105	107
Chest	90	98	106	114	122	130	136	142	148
Hip	90	98	106	114	122	130	136	142	148
Shoulder	40	43	46	49	52	55	58	61	65
Shoulder outline	56	58	60	62	64	66	68	70	72

Size tolerance (Before washing): 2%



Certified clothing according to the 2018 ESD standard. It's proved with the following tag.



PF2 ESD PREMIUM SMOCK

2/3 LENGTH

DESIGNED BY *Ms. Vandornyzik Andrea*

FEATURES

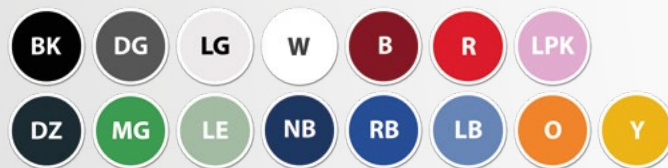
- Available sizes: female XS - 5XL
- 2 side pockets
- Hidden snap-fasteners
- Rubberized Cuff

Embroidered or printed company logo or text available upon request!

Individual custom made ESD Clothing also available!

AVAILABLE FABRICS AND COLOURS

KK01 FABRIC



TH55 FABRIC



ORDERING CODE

PF2 - KK01 - W - LB L
 style fabric colour1 colour2 size



Certified clothing according to the 2018 ESD standard. It's proved with the following tag.

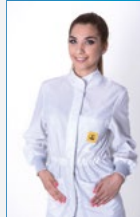
OPTIONAL

CONDUCTIVE ELASTICATED CUFF



CODE: **RAN**

WAIST KNITTER



CODE: **OTO**

GROUNDING SMOCK



CODE: **GND**

CHOOSE THE MOST MATCHING COLOUR COMBINATION OF YOUR COMPANY!



SIZE CHART (cm)

PF2 ESD Premium smock	XS	S	M	L	XL	XXL	3XL	4XL	5XL
Cuff	32	33	34	35	36	36	37	37	38
Sleeve	51	53	57	61	65	65	67	67	68
Length	89	91	93	95	99	101	103	105	107
Chest	90	98	106	114	122	130	136	142	148
Hip	90	98	106	114	122	130	136	142	148
Shoulder	40	43	46	49	52	55	58	61	65
Shoulder outline	56	58	60	62	64	66	68	70	72

Size tolerance (Before washing): 2%

PS2 ESD PREMIUM SMOCK

2/3 LENGTH

DESIGNED BY Ms. *Vandorniyik Andrea*

FEATURES

- Available sizes: Male XS - 5XL
- 2 side pockets
- Hidden snap-fasteners
- Rubberized cuff

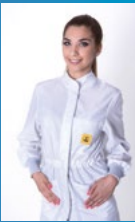
OPTIONAL

CONDUCTIVE ELASTICATED CUFF



CODE: **RAN**

WAIST KNITTER



CODE: **OTO**

GROUNDING SMOCK



CODE: **GND**

Embroidered or printed company logo or text available upon request!

Individual custom made ESD Clothing also available!

CHOOSE THE MOST MATCHING COLOUR COMBINATION OF YOUR COMPANY!

AVAILABLE FABRICS AND COLOURS

KK01 FABRIC



TH55 FABRIC



ORDERING CODE

PS2 - **KK01** - **W** - **LB** **L**
 style fabric colour1 colour2 size



Certified clothing according to the 2018 ESD standard. It's proved with the following tag.

SIZE CHART (cm)

PS2 ESD Premium smock	XS	S	M	L	XL	XXL	3XL	4XL	5XL
Cuff	32	33	34	35	36	36	37	37	38
Sleeve	51	53	57	61	65	65	67	67	68
Length	89	91	93	95	99	101	103	105	107
Chest	90	98	106	114	122	130	136	142	148
Hip	90	98	106	114	122	130	136	142	148
Shoulder	40	43	46	49	52	55	58	61	65
Shoulder outline	56	58	60	62	64	66	68	70	72

Size tolerance (Before washing): 2%



PF3 ESD PREMIUM SMOCK

2/3 LENGTH

DESIGNED BY Ms. *Kovacs Borbála*

FEATURES

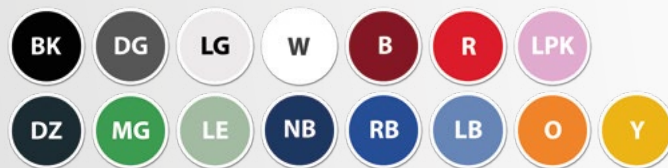
- Available sizes: female XS - 5XL
- 2 side pocketsts
- Hidden snap-fasteners
- Cuff with snap-fasteners

Embroidered or printed company logo or text available upon request!

Individual custom made ESD Clothing also available!

AVAILABLE FABRICS AND COLOURS

KK01 FABRIC



TH55 FABRIC



ORDERING CODE

PF3 - KK01 - LB - LG L
 style fabric colour1 colour2 size



Certified clothing according to the 2018 ESD standard. It's proved with the following tag.

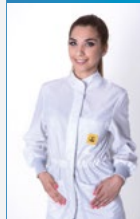
OPTIONAL

CONDUCTIVE ELASTICATED CUFF



CODE: **RAN**

WAIST KNITTER



CODE: **OTO**

GROUNDING SMOCK



CODE: **GND**

CHOOSE THE MOST MATCHING COLOUR COMBINATION OF YOUR COMPANY!



SIZE CHART (cm)

PF3 ESD Premium smock	XS	S	M	L	XL	XXL	3XL	4XL	5XL
Cuff	32	33	34	35	36	36	37	37	38
Sleeve	51	53	57	61	65	65	67	67	68
Length	89	91	93	95	99	101	103	105	107
Chest	90	98	106	114	122	130	136	142	148
Hip	90	98	106	114	122	130	136	142	148
Shoulder	40	43	46	49	52	55	58	61	65
Shoulder outline	56	58	60	62	64	66	68	70	72

Size tolerance (Before washing): 2%

PS3 ESD PREMIUM SMOCK

2/3 LENGTH

DESIGNED BY MS. *Kovacs Borbála*

FEATURES

- Available sizes: Male XS - 5XL
- 2 side pockets
- Hidden snap-fasteners
- Cuff with snap-fasteners

OPTIONAL

CONDUCTIVE ELASTICATED CUFF



CODE: **RAN**

WAIST KNITTER



CODE: **OTO**

GROUNDING SMOCK



CODE: **GND**

Embroidered or printed company logo or text available upon request!

Individual custom made ESD Clothing also available!

CHOOSE THE MOST MATCHING COLOUR COMBINATION OF YOUR COMPANY!

AVAILABLE FABRICS AND COLOURS

KK01 FABRIC



TH55 FABRIC



ORDERING CODE

PS3 - **KK01** - **LB** - **LG** **L**
 style fabric colour1 colour2 size



Certified clothing according to the 2018 ESD standard. It's proved with the following tag.

SIZE CHART (cm)

PS3 ESD Premium smock	XS	S	M	L	XL	XXL	3XL	4XL	5XL
Cuff	32	33	34	35	36	36	37	37	38
Sleeve	51	53	57	61	65	65	67	67	68
Length	89	91	93	95	99	101	103	105	107
Chest	90	98	106	114	122	130	136	142	148
Hip	90	98	106	114	122	130	136	142	148
Shoulder	40	43	46	49	52	55	58	61	65
Shoulder outline	56	58	60	62	64	66	68	70	72

Size tolerance (Before washing): 2%





BUSINESS LINE



ING

... 48

ING ESD MALE OXFORD SHIRT



IFG

... 49

IFG ESD OXFORD SHIRT



NT

... 50

NT ESD MALE SUITE PANTS



NTF

... 51

NTF ESD FEMALE SUITE PANTS

ING ESD MALE OXFORD SHIRT

FEATURES

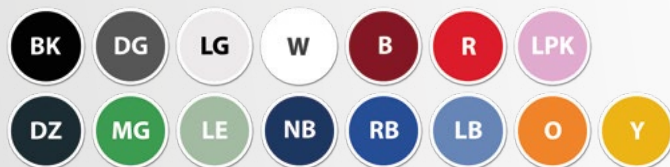
- Business style
- Available sizes: Male XS - 5XL
- 1 breast pocket
- ESD symbol on sleeve
- With buttons

Embroidered or printed company logo or text available upon request!

Individual custom made ESD Clothing also available!

AVAILABLE FABRICS AND COLOURS

KK01 FABRIC



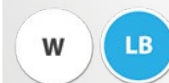
TH55 FABRIC



TH65 FABRIC



CR10 FABRIC



CT35 FABRIC



ORDERING CODE

ING - KK01 - W L
 style fabric colour size



Certified clothing according to the 2018 ESD standard. It's proved with the following tag.

SIZE CHART (cm)

ING ESD Male Oxford shirt	XS	S	M	L	XL	XXL	3XL	4XL	5XL
Sleeve	56	58	60	62	64	66	68	70	70
Length	66	68	70	72	74	76	78	80	80
Chest	94	100	106	112	118	124	130	136	142
Shoulder	39	41	43	45	47	49	51	54	57
Cuff outline	23	24	25	26	27	28	29	30	31

Size tolerance (Before washing): 2%

IFG ESD OXFORD SHIRT

FEATURES

- Available sizes: female XS - 5XL
- ESD symbol on sleeve
- With buttons

Embroidered or printed company logo or text available upon request!

Individual custom made ESD Clothing also available!

AVAILABLE FABRICS AND COLOURS

KK01 FABRIC



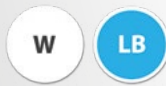
TH55 FABRIC



TH65 FABRIC



CR10 FABRIC



CT35 FABRIC



ORDERING CODE

IFG - KK01 - W L
style fabric colour size



Certified clothing according to the 2018 ESD standard. It's proved with the following tag.

SIZE CHART (cm)

IFG ESD Oxford shirt	XS	S	M	L	XL	XXL	3XL	4XL	5XL
Sleeve	56	58	60	62	64	66	68	70	70
Length	56	58	60	62	64	66	68	70	70
Chest	84	88	92	96	100	104	108	112	116
Shoulder	40	40	42	44	46	48	50	52	54
Cuff outline	21	22	23	24	25	26	27	28	29

Size tolerance (Before washing): 2%



NT ESD MALE SUITE PANTS

FEATURES

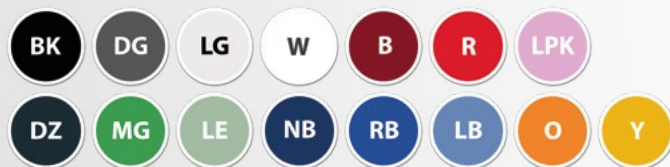
- Straight style
- Available sizes: Male XS - 5XL
- 2 side pocket, 1 hip pocket with ESD symbol

Embroidered or printed company logo or text available upon request!

Individual custom made ESD Clothing also available!

AVAILABLE FABRICS AND COLOURS

KK01 FABRIC



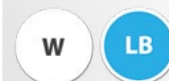
TH55 FABRIC



TH65 FABRIC



CR10 FABRIC



CT35 FABRIC



ORDERING CODE

NT - **KK01** - **BK** **L**
 style fabric colour size



Certified clothing according to the 2018 ESD standard. It's proved with the following tag.

SIZE CHART (cm)

NT ESD Male suite pants	XS	S	M	L	XL	XXL	3XL	4XL	5XL
Waist	80	84	88	92	96	100	104	109	113
Hip	98	102	107	111	115	119	123	128	132
Length external	102	104	106	108	110	112	114	116	118

Size tolerance (Before washing): 2%

NTF ESD FEMALE SUITE PANTS

FEATURES

- Available sizes: female XS - 5XL
- 2 side pockets
- With ESD Symbol

Embroidered or printed company logo or text available upon request!

Individual custom made ESD Clothing also available!

AVAILABLE FABRICS AND COLOURS

KK01 FABRIC



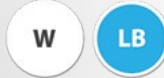
TH55 FABRIC



TH65 FABRIC



CR10 FABRIC



CT35 FABRIC



ORDERING CODE

NTF - KK01 - BK L
 style fabric colour size



Certified clothing according to the 2018 ESD standard. It's proved with the following tag.

SIZE CHART (cm)

NTF ESD Female suite pants	XS	S	M	L	XL	XXL	3XL	4XL	5XL
Waist	68	72	76	80	84	88	92	97	101
Hip	98	102	107	111	115	119	123	128	132
Length external	102	104	106	108	110	112	114	116	118

Size tolerance (Before washing): 2%





SUMMER LINE

**TKO****... 54****TKO ESD T-SHIRT**WITH SHORT SLEEVE, ROUND NECK,
NO POCKET**TKZ****... 55****TKZ ESD T-SHIRT**WITH SHORT SLEEVE, ROUND NECK,
WITH POCKET**LKO****... 56****LKO ESD T-SHIRT**WITH LONG SLEEVE, ROUND NECK,
NO POCKET**LKZ****... 57****LKZ ESD T-SHIRT**WITH LONG SLEEVE, ROUND NECK, WITH
POCKET**TGO****... 58****TGO ESD T-SHIRT**WITH SHORT SLEEVE, V-NECK,
NO POCKET**TGZ****... 59****TGZ ESD T-SHIRT**WITH SHORT SLEEVE, V-NECK,
WITH POCKET**LGO****... 60****LGO ESD T-SHIRT**WITH LONG SLEEVE, V-NECK,
NO POCKET**LGZ****... 61****LGZ ESD T-SHIRT**WITH LONG SLEEVE, V-NECK,
WITH POCKET**PGO****... 62****PGO ESD POLO-SHIRT**

WITH SHORT SLEEVE, NO POCKET

**PGZ****... 63****PGZ ESD POLO-SHIRT**

WITH SHORT SLEEVE, WITH POCKET

**QGO****... 64****QGO ESD POLO-SHIRT**

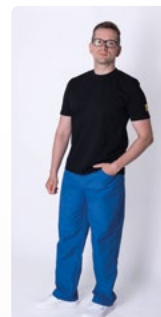
WITH LONG SLEEVE, NO POCKET

**QGZ****... 65****QGZ ESD POLO-SHIRT**

WITH LONG SLEEVE, WITH POCKET

**TLY****... 66****TLY ESD STRETCH T-SHIRT**

WITH SHORT SLEEVE, ROUND NECK

**RGA****... 67****RGA ESD SHORTS**

TKO ESD T-SHIRT

WITH SHORT SLEEVE, ROUND NECK, NO POCKET

FEATURES

- Round neck
- Available sizes: unisex XS - 5XL
- Without any pocket
- ESD symbol on sleeve

Embroidered or printed company logo or text available upon request!

Individual custom made ESD Clothing also available!

AVAILABLE FABRICS AND COLOURS

TS15 FABRIC



TS16 FABRIC



PS21 FABRIC



ORDERING CODE

TKO - TS15 - W L
 style fabric colour size



Certified clothing according to the 2018 ESD standard. It's proved with the following tag.

SIZE CHART (cm)

TKO ESD T-Shirt	XS	S	M	L	XL	XXL	3XL	4XL	5XL
Sleeve	20,5	21,5	22,5	23,5	25	26,5	28	29,5	31
Length	63	66	69	72	75	78	81	84	87
Chest	100	106	112	118	124	130	136	142	148
Shoulder	41	43	45	47	49	51	54	57	60

Size tolerance (Before washing): 2%

THE GIVEN SIZES ARE BEFORE WASHING.
 AFTER WASHING THERE CAN BE 8-10 % SHRINKING OF THE WIDTH (ESPECIALLY THE CHEST)!!!

TKZ ESD T-SHIRT

WITH SHORT SLEEVE, ROUND NECK, WITH POCKET

FEATURES

- Round neck
- Available sizes: unisex XS - 5XL
- Breast pocket with ESD symbol

Embroidered or printed company logo or text available upon request!

Individual custom made ESD Clothing also available!

AVAILABLE FABRICS AND COLOURS

TS15 FABRIC



TS16 FABRIC



PS21 FABRIC



ORDERING CODE

TKZ - TS15 - GA L
style fabric colour size

SIZE CHART (cm)

TKZ ESD T-Shirt	XS	S	M	L	XL	XXL	3XL	4XL	5XL
Sleeve	20,5	21,5	22,5	23,5	25	26,5	28	29,5	31
Length	63	66	69	72	75	78	81	84	87
Chest	100	106	112	118	124	130	136	142	148
Shoulder	41	43	45	47	49	51	54	57	60

Size tolerance (Before washing): 2%

THE GIVEN SIZES ARE BEFORE WASHING.
AFTER WASHING THERE CAN BE 8-10 % SHRINKING OF THE WIDTH (ESPECIALLY THE CHEST)!!!



Certified clothing according to the 2018 ESD standard. It's proved with the following tag.

LKO ESD T-SHIRT

WITH LONG SLEEVE, ROUND NECK, NO POCKET

FEATURES

- Round neck
- Available sizes: unisex XS - 5XL
- Without any pocket
- ESD symbol on sleeve

Embroidered or printed company logo or text available upon request!

Individual custom made ESD Clothing also available!

AVAILABLE FABRICS AND COLOURS

TS15 FABRIC



TS16 FABRIC



PS21 FABRIC



ORDERING CODE

LKO - **TS15** - **RB** **L**
 style fabric colour size



Certified clothing according to the 2018 ESD standard. It's proved with the following tag.

SIZE CHART (cm)

LKO ESD T-Shirt	XS	S	M	L	XL	XXL	3XL	4XL	5XL
Sleeve	51,5	53	57	61	63	65	67	67	68
Length	63	66	69	72	75	78	81	84	87
Chest	100	106	112	118	124	130	136	142	148
Shoulder	41	43	45	47	49	51	54	57	60

Size tolerance (Before washing): 2%

THE GIVEN SIZES ARE BEFORE WASHING.
 AFTER WASHING THERE CAN BE 8-10 % SHRINKING OF THE WIDTH (ESPECIALLY THE CHEST)!!!

LKZ ESD T-SHIRT

WITH LONG SLEEVE, ROUND NECK, WITH POCKET

FEATURES

- Round neck
- Available sizes: unisex XS - 5XL
- Breast pocket with ESD symbol

Embroidered or printed company logo or text available upon request!

Individual custom made ESD Clothing also available!

AVAILABLE FABRICS AND COLOURS

TS15 FABRIC



TS16 FABRIC



PS21 FABRIC



ORDERING CODE

LKZ - **TS15** - **BK** **L**
 style fabric colour size

SIZE CHART (cm)

LKZ ESD T-Shirt	XS	S	M	L	XL	XXL	3XL	4XL	5XL
Sleeve	51,5	53	57	61	63	65	67	67	68
Length	63	66	69	72	75	78	81	84	87
Chest	100	106	112	118	124	130	136	142	148
Shoulder	41	43	45	47	49	51	54	57	60

Size tolerance (Before washing): 2%

THE GIVEN SIZES ARE BEFORE WASHING.
 AFTER WASHING THERE CAN BE 8-10 % SHRINKING OF THE
 WIDTH (ESPECIALLY THE CHEST)!!!



Certified clothing according to the 2018 ESD standard. It's proved with the following tag.

TGO ESD T-SHIRT

WITH SHORT SLEEVE, V-NECK, NO POCKET

FEATURES

- V-neck
- Available sizes: unisex XS - 5XL
- Without any pocket
- ESD symbol on sleeve

Embroidered or printed company logo or text available upon request!

Individual custom made ESD Clothing also available!

AVAILABLE FABRICS AND COLOURS

TS15 FABRIC



TS16 FABRIC



PS21 FABRIC



ORDERING CODE

TGO - TS15 - W L
 style fabric colour size



Certified clothing according to the 2018 ESD standard. It's proved with the following tag.

SIZE CHART (cm)

TGO ESD T-Shirt	XS	S	M	L	XL	XXL	3XL	4XL	5XL
Sleeve	20,5	21,5	22,5	23,5	25	26,5	28	29,5	31
Length	63	66	69	72	75	78	81	84	87
Chest	100	106	112	118	124	130	136	142	148
Shoulder	41	43	45	47	49	51	54	57	60

Size tolerance (Before washing): 2%

THE GIVEN SIZES ARE BEFORE WASHING.
 AFTER WASHING THERE CAN BE 8-10 % SHRINKING OF THE WIDTH (ESPECIALLY THE CHEST)!!!

TGZ ESD T-SHIRT

WITH SHORT SLEEVE, V-NECK, WITH POCKET

FEATURES

- V-neck
- Available sizes: unisex XS - 5XL
- Breast pocket with ESD symbol

Embroidered or printed company logo or text available upon request!

Individual custom made ESD Clothing also available!

AVAILABLE FABRICS AND COLOURS

TS15 FABRIC



TS16 FABRIC



PS21 FABRIC



ORDERING CODE

TGZ - TS15 - GA L
 style fabric colour size

SIZE CHART (cm)

TGZ ESD T-Shirt	XS	S	M	L	XL	XXL	3XL	4XL	5XL
Sleeve	20,5	21,5	22,5	23,5	25	26,5	28	29,5	31
Length	63	66	69	72	75	78	81	84	87
Chest	100	106	112	118	124	130	136	142	148
Shoulder	41	43	45	47	49	51	54	57	60

Size tolerance (Before washing): 2%

THE GIVEN SIZES ARE BEFORE WASHING.
 AFTER WASHING THERE CAN BE 8-10 % SHRINKING OF THE
 WIDTH (ESPECIALLY THE CHEST)!!!



Certified clothing according to the 2018 ESD standard. It's proved with the following tag.



LGO ESD T-SHIRT

WITH LONG SLEEVE, V-NECK, NO POCKET

FEATURES

- V-neck
- Available sizes: unisex XS - 5XL
- Without any pocket
- ESD symbol on sleeve

Embroidered or printed company logo or text available upon request!

Individual custom made ESD Clothing also available!

AVAILABLE FABRICS AND COLOURS

TS15 FABRIC



TS16 FABRIC



PS21 FABRIC



ORDERING CODE

LGO - TS15 - RB L
 style fabric colour size



Certified clothing according to the 2018 ESD standard. It's proved with the following tag.

SIZE CHART (cm)

LGO ESD T-Shirt	XS	S	M	L	XL	XXL	3XL	4XL	5XL
Sleeve	51,5	53	57	61	63	65	67	67	68
Length	63	66	69	72	75	78	81	84	87
Chest	100	106	112	118	124	130	136	142	148
Shoulder	41	43	45	47	49	51	54	57	60

Size tolerance (Before washing): 2%

THE GIVEN SIZES ARE BEFORE WASHING.
 AFTER WASHING THERE CAN BE 8-10 % SHRINKING OF THE WIDTH (ESPECIALLY THE CHEST)!!!

LGZ ESD T-SHIRT

WITH LONG SLEEVE, V-NECK, WITH POCKET

FEATURES

- V-neck
- Available sizes: unisex XS - 5XL
- Breast pocket with ESD symbol

Embroidered or printed company logo or text available upon request!

Individual custom made ESD Clothing also available!

AVAILABLE FABRICS AND COLOURS

TS15 FABRIC



TS16 FABRIC



PS21 FABRIC



ORDERING CODE

LGZ - TS15 - BK L
 style fabric colour size

SIZE CHART (cm)

LKZ ESD T-Shirt	XS	S	M	L	XL	XXL	3XL	4XL	5XL
Sleeve	51,5	53	57	61	63	65	67	67	68
Length	63	66	69	72	75	78	81	84	87
Chest	100	106	112	118	124	130	136	142	148
Shoulder	41	43	45	47	49	51	54	57	60

Size tolerance (Before washing): 2%

THE GIVEN SIZES ARE BEFORE WASHING.
 AFTER WASHING THERE CAN BE 8-10 % SHRINKING OF THE
 WIDTH (ESPECIALLY THE CHEST)!!!



Certified clothing according to the 2018 ESD standard. It's proved with the following tag.

PGO ESD POLO-SHIRT

WITH SHORT SLEEVE, NO POCKET

FEATURES

- Available sizes: unisex XS - 5XL
- Without any pocket
- ESD symbol on sleeve
- Hidden snap-fasteners

OPTIONAL

- Collar from its own fabric – Code: **SAA**

Embroidered or printed company logo or text available upon request!

Individual custom made ESD Clothing also available!

AVAILABLE FABRICS AND COLOURS

TS15 FABRIC



TS16 FABRIC



PS21 FABRIC



ORDERING CODE

PGO - **PS21** - **GA** **L**
 style fabric colour size

SIZE CHART (cm)

PGO ESD POLO-Shirt	XS	S	M	L	XL	XXL	3XL	4XL	5XL
Sleeve	20,5	21,5	22,5	23,5	25	26,5	28	29,5	31
Length	63	66	69	72	75	78	81	84	87
Chest	100	106	112	118	124	130	136	142	148
Shoulder	41	43	45	47	49	51	54	57	60

Size tolerance (Before washing): 2%



Certified clothing according to the 2018 ESD standard. It's proved with the following tag.

THE GIVEN SIZES ARE BEFORE WASHING.
 AFTER WASHING THERE CAN BE 8-10 % SHRINKING OF THE WIDTH (ESPECIALLY THE CHEST)!!!

PGZ ESD POLO-SHIRT

WITH LONG SLEEVE, WITH POCKET

FEATURES

- Available sizes: unisex XS - 5XL
- Breast pocket with ESD symbol
- Hidden snap-fasteners

OPTIONAL

- ➕ Collar from its own fabric – Code: **SAA**

Embroidered or printed company logo or text available upon request!

Individual custom made ESD Clothing also available!

AVAILABLE FABRICS AND COLOURS

TS15 FABRIC



TS16 FABRIC



PS21 FABRIC



ORDERING CODE

PGZ - TS16 - W L
 style fabric colour size

SIZE CHART (cm)

PGZ ESD POLO-Shirt	XS	S	M	L	XL	XXL	3XL	4XL	5XL
Sleeve	20,5	21,5	22,5	23,5	25	26,5	28	29,5	31
Length	63	66	69	72	75	78	81	84	87
Chest	100	106	112	118	124	130	136	142	148
Shoulder	41	43	45	47	49	51	54	57	60

Size tolerance (Before washing): 2%

THE GIVEN SIZES ARE BEFORE WASHING.
 AFTER WASHING THERE CAN BE 8-10 % SHRINKING OF THE
 WIDTH (ESPECIALLY THE CHEST)!!!



Certified clothing according to the 2018 ESD standard. It's proved with the following tag.

QGO ESD POLO-SHIRT

WITH LONG SLEEVE, NO POCKET

FEATURES

- Available sizes: unisex XS - 5XL
- Without any pocket
- ESD symbol on sleeve
- Hidden snap-fasteners

Embroidered or printed company logo or text available upon request!

Individual custom made ESD Clothing also available!

OPTIONAL

- Collar from its own fabric – Code: **SAA**

AVAILABLE FABRICS AND COLOURS

TS15 FABRIC



TS16 FABRIC



PS21 FABRIC



ORDERING CODE

QGO - **PS21** - **RB L**
 style fabric colour size

SIZE CHART (cm)

QGO ESD POLO-Shirt	XS	S	M	L	XL	XXL	3XL	4XL	5XL
Sleeve	51,5	53	57	61	63	65	67	67	68
Length	63	66	69	72	75	78	81	84	87
Chest	100	106	112	118	124	130	136	142	148
Shoulder	41	43	45	47	49	51	54	57	60

Size tolerance (Before washing): 2%



Certified clothing according to the 2018 ESD standard. It's proved with the following tag.

THE GIVEN SIZES ARE BEFORE WASHING.
 AFTER WASHING THERE CAN BE 8-10 % SHRINKING OF THE WIDTH (ESPECIALLY THE CHEST)!!!

QGZ ESD POLO-SHIRT

WITH LONG SLEEVE, WITH POCKET

FEATURES

- Available sizes: unisex XS - 5XL
- Breast pocket with ESD symbol
- Hidden snap-fasteners

OPTIONAL

- ➕ Collar from its own fabric – Code: **SAA**

Embroidered or printed company logo or text available upon request!

Individual custom made ESD Clothing also available!

AVAILABLE FABRICS AND COLOURS

TS15 FABRIC



TS16 FABRIC



PS21 FABRIC



ORDERING CODE

QGZ - **TS16** - **NB** **L**
 style fabric colour size

SIZE CHART (cm)

QGZ ESD POLO-Shirt	XS	S	M	L	XL	XXL	3XL	4XL	5XL
Sleeve	51,5	53	57	61	63	65	67	67	68
Length	63	66	69	72	75	78	81	84	87
Chest	100	106	112	118	124	130	136	142	148
Shoulder	41	43	45	47	49	51	54	57	60

Size tolerance (Before washing): 2%

THE GIVEN SIZES ARE BEFORE WASHING.
 AFTER WASHING THERE CAN BE 8-10 % SHRINKING OF THE
 WIDTH (ESPECIALLY THE CHEST)!!!



Certified clothing according to the 2018 ESD standard. It's proved with the following tag.

TLY ESD STRETCH T-SHIRT

WITH ROUND NECK, SHORT SLEEVE

FEATURES

- Skinny style, stretch material
- Round neck
- Short sleeve
- Available sizes: unisex XS - 5XL
- Without any pocket
- ESD symbol on sleeve
- Comfortable, breathable

Embroidered or printed company logo or text available upon request!

Individual custom made ESD Clothing also available!

AVAILABLE FABRICS AND COLOURS

LY20 FABRIC

BK

ORDERING CODE

TLY - LY20 - BK L
style fabric colour size

SIZE CHART (cm)

TLY ESD Stretch T-Shirt	XS	S	M	L	XL	XXL	3XL	4XL	5XL
Sleeve	19,5	20,5	21,5	22,5	23,5	25	26,5	28	29,5
Length	56	59	62	65	68	71	74	77	80
Chest	94	100	106	112	118	124	130	136	142
Shoulder	39	41	43	45	47	49	51	54	57

Size tolerance (Before washing): 2%



Certified clothing according to the 2018 ESD standard. It's proved with the following tag.

RGA ESD SHORTS

FEATURES

- Straight style
- Available sizes: Male XS - 5XL
- 2 side pockets, 1 hip pocket with ESD symbol
- 1 side pocket on the leg
- 1 tool pocket on the leg
- Rubberized waist with snap-fastener

Embroidered or printed company logo or text available upon request!

Individual custom made ESD Clothing also available!

AVAILABLE FABRICS AND COLOURS

KK01 FABRIC



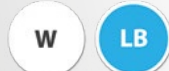
TH55 FABRIC



TH65 FABRIC



CR10 FABRIC



CT35 FABRIC



ORDERING CODE

RGA - **KK01** - **DG** **L**
 style fabric colour size



Certified clothing according to the 2018 ESD standard. It's proved with the following tag.



SIZE CHART (cm)

RGA ESD Shorts	XS	S	M	L	XL	XXL	3XL	4XL	5XL
Length external	49	51	53	55	57	59	61	63	65
Hip	98	102	107	111	115	119	123	128	132

Size tolerance (Before washing): 2%



WINTER LINE



CAS

... 70

CAS ESD CARDIGAN
WITH SHORT ZIPPER



CAL

... 71

CAL ESD CARDIGAN
WITH LONG ZIPPER



SWS

... 72

SWS ESD SWEATSHIRT
WITH ROUND NECK



SGS

... 73

SGS ESD SWEATSHIRT
WITH V-NECK



SGW

... 74

SGW ESD VEST
WITH ROUND NECK



SWW

... 75

SWW ESD VEST
WITH V-NECK



WJ

... 76

WJ ESD WINTER JACKET



WW

... 77

WW ESD WINTER VEST



WN

... 78

WN ESD WINTER TROUSERS WITH BRIDLES



SKS

... 79

SKS ESD HOODED SWEATSHIRT



VES-S

... 80

VES-S ESD QUILTED VEST



VES-H

... 81

VES-H ESD QUILTED VEST
WITH ZIPPER



WH

... 82

WH ESD WINTER HAT



WS

... 83

WS ESD TUBE SCARF



CAS ESD CARDIGAN

WITH SHORT ZIPPER

FEATURES

- Available sizes: unisex XS - 5XL
- With short zipper
- 2 side pockets
- ESD symbol on chest
- ESD Cuff
- Comfortable, breathable

Embroidered or printed company logo or text available upon request!

Individual custom made ESD Clothing also available!

AVAILABLE FABRICS AND COLOURS

THSS FABRIC



THSB FABRIC



ORDERING CODE

CAS - THSS - NB L
 style fabric colour size



Certified clothing according to the 2018 ESD standard. It's proved with the following tag.

SIZE CHART (cm)

CAS ESD Cardigan	XS	S	M	L	XL	XXL	3XL	4XL	5XL
Chest	108	112	116	120	124	130	136	142	148
Length	64	66	68	70	72	74	76	78	80
Sleeve	72	74	76	78	80	82	84	84	85

Size tolerance (Before washing): 2%

CAL ESD CARDIGAN

WITH LONG ZIPPER

FEATURES

- Available sizes: unisex XS - 5XL
- ESD Cuff
- With full length zipper
- Comfortable, breathable
- 2 side pockets
- ESD symbol on chest

Embroidered or printed company logo or text available upon request!

Individual custom made ESD Clothing also available!

AVAILABLE FABRICS AND COLOURS

THSS FABRIC

BK

NB

RB

THSB FABRIC

BK

ORDERING CODE

CAL - THSS - NB L
 style fabric colour size



Certified clothing according to the 2018 ESD standard. It's proved with the following tag.

SIZE CHART (cm)

CAL ESD Cardigan	XS	S	M	L	XL	XXL	3XL	4XL	5XL
Chest	108	112	116	120	124	130	136	142	148
Length	64	66	68	70	72	74	76	78	80
Sleeve	72	74	76	78	80	82	84	84	85

Size tolerance (Before washing): 2%



SWS ESD SWEATSHIRT

WITH ROUND NECK

FEATURES

- Available sizes: unisex XS - 5XL
- Round neck
- ESD symbol on chest
- ESD Cuff

Embroidered or printed company logo or text available upon request!

Individual custom made ESD Clothing also available!

AVAILABLE FABRICS AND COLOURS

THSS FABRIC



THSB FABRIC



ORDERING CODE

SWS - THSS - NB L
 style fabric colour size



Certified clothing according to the 2018 ESD standard. It's proved with the following tag.

SIZE CHART (cm)

SWS ESD Sweatshirt	XS	S	M	L	XL	XXL	3XL	4XL	5XL
Chest	108	112	116	120	124	130	136	142	148
Length	64	66	68	70	72	74	76	78	80
Sleeve	72	74	76	78	80	82	84	84	85

Size tolerance (Before washing): 2%

SGS ESD SWEATSHIRT

WITH V-NECK

FEATURES

- Available sizes: unisex XS - 5XL
- V-neck
- ESD symbol on chest
- ESD Cuff

Embroidered or printed company logo or text available upon request!

Individual custom made ESD Clothing also available!

AVAILABLE FABRICS AND COLOURS

THSS FABRIC

BK

NB

RB

THSB FABRIC

BK

ORDERING CODE

SGS - THSS - NB L
 style fabric colour size



Certified clothing according to the 2018 ESD standard. It's proved with the following tag.

SIZE CHART (cm)

SGS ESD Sweatshirt	XS	S	M	L	XL	XXL	3XL	4XL	5XL
Chest	108	112	116	120	124	130	136	142	148
Length	64	66	68	70	72	74	76	78	80
Sleeve	72	74	76	78	80	82	84	84	85

Size tolerance (Before washing): 2%



SGW ESD VEST

WITH ROUND NECK

FEATURES

- Available sizes: unisex XS - 5XL
- Round neck
- ESD symbol on chest

Embroidered or printed company logo or text available upon request!

Individual custom made ESD Clothing also available!

AVAILABLE FABRICS AND COLOURS

THSS FABRIC



THSB FABRIC



ORDERING CODE

SGW - THSS - NB L
 style fabric colour size



Certified clothing according to the 2018 ESD standard. It's proved with the following tag.

SIZE CHART (cm)

SGW ESD Vest	XS	S	M	L	XL	XXL	3XL	4XL	5XL
Chest	100	106	112	118	124	130	136	142	148
Length	63	66	69	72	75	78	81	84	87
Shoulder	41	43	45	47	49	51	54	57	60

Size tolerance (Before washing): 2%

SWW ESD VEST

V-NECK

FEATURES

- Available sizes: unisex XS - 5XL
- V-neck
- ESD symbol on chest

Embroidered or printed company logo or text available upon request!

Individual custom made ESD Clothing also available!

AVAILABLE FABRICS AND COLOURS

THSS FABRIC

BK

NB

RB

THSB FABRIC

BK

ORDERING CODE

SWW - THSS - NB L

style fabric colour size



Certified clothing according to the 2018 ESD standard. It's proved with the following tag.

SIZE CHART (cm)

SWW ESD Vest	XS	S	M	L	XL	XXL	3XL	4XL	5XL
Chest	100	106	112	118	124	130	136	142	148
Length	63	66	69	72	75	78	81	84	87
Shoulder	41	43	45	47	49	51	54	57	60

Size tolerance (Before washing): 2%



WJ ESD WINTER JACKET

FEATURES

- Available sizes: unisex XS - 5XL
- ESD symbol on chest
- Wool inlining
- 2 side pockets
- Water-repellent outer layer
- Hidden zipper

Embroidered or printed company logo or text available upon request!

Individual custom made ESD Clothing also available!

AVAILABLE FABRICS AND COLOURS

WC10 FABRIC

NB

ORDERING CODE

WJ - WC10 - NB L
 style fabric colour size



Certified clothing according to the 2018 ESD standard. It's proved with the following tag.

SIZE CHART (cm)

WJ ESD Winter jacket	XS	S	M	L	XL	XXL	3XL	4XL	5XL
Chest	130	132	136	140	144	150	154	158	162
Sleeve	62	63	64	65	68	68	69	69	70
Length	70	71	72	73	74	75	76	77	78

Size tolerance (Before washing): 2%

WW ESD WINTER VEST

FEATURES

- Available sizes: unisex XS - 5XL
- ESD symbol on chest
- Wool inlining
- 2 side pockets
- Water-repellent outer layer
- Hidden zipper

Embroidered or printed company logo or text available upon request!

Individual custom made ESD Clothing also available!

AVAILABLE FABRICS AND COLOURS

WC10 FABRIC

NB

ORDERING CODE

WW - WC10 - NB L
 style fabric colour size



Certified clothing according to the 2018 ESD standard. It's proved with the following tag.

SIZE CHART (cm)

WW ESD Winter vest	XS	S	M	L	XL	XXL	3XL	4XL	5XL
Chest	130	132	136	140	144	150	154	158	162
Length	70	71	72	73	74	75	76	77	78

Size tolerance (Before washing): 2%



WN ESD WINTER TROUSERS WITH BRIDLES

FEATURES

- Inlined
- Available sizes: unisex XS - 5XL
- Water-repellent outer layer
- 2 side pockets, 1 breast pocket with ESD symbol
- 2 side pocket on legs
- 2 quick release buckles

Embroidered or printed company logo or text available upon request!

Individual custom made ESD Clothing also available!

AVAILABLE FABRICS AND COLOURS

WC10 FABRIC

NB

ORDERING CODE

WN - **WC10** - **NB** **L**
 style fabric colour size



Certified clothing according to the 2018 ESD standard. It's proved with the following tag.

SIZE CHART (cm)

WN ESD Winter trousers	XS	S	M	L	XL	XXL	3XL	4XL	5XL
Length external	104	106	108	110	112	114	116	118	119
Hip	102	107	111	115	119	123	128	132	136
Bridle length	62	63	64	64	66	66	68	68	70

Size tolerance (Before washing): 2%



SKS ESD HOODIED SWEATSHIRT

FEATURES

- Available sizes: unisex XS - 5XL
- Hood with strings
- With ESD Symbol on sleeve
- ESD Cuff
- 2 side pockets

Embroidered or printed company logo or text available upon request!

Individual custom made ESD Clothing also available!

AVAILABLE FABRICS AND COLOURS

THSS FABRIC

BK

NB

RB

THSB FABRIC

BK

ORDERING CODE

SKS - **THSS** - **NB** **L**
 style fabric colour size



Certified clothing according to the 2018 ESD standard. It's proved with the following tag.

SIZE CHART (cm)

SKS ESD Hoodied sweatshirt	XS	S	M	L	XL	XXL	3XL	4XL	5XL
Sleeve	52	53	57	61	63	65	67	67	68
Length	64	66	68	70	72	74	76	76	76
Chest	100	106	112	118	124	130	136	142	148
Shoulder	41	43	45	47	49	51	54	57	60

Size tolerance (Before washing): 2%



VES-S ESD QUILTED VEST

FEATURES

- Available sizes: unisex XS - 5XL
- Inlined
- Hidden snap-fasteners
- ESD symbol on chest
- 2 side pockets
- Not waterproof

Embroidered or printed company logo or text available upon request!

Individual custom made ESD Clothing also available!

AVAILABLE FABRICS AND COLOURS

CT35 FABRIC

W

Other fabric types and colours also available with MOQ.
Please send your request to: : sales@destsa.hu

ORDERING CODE

VES-S - **CT35** - **W** **L**
style fabric colour size



Certified clothing according to the 2018 ESD standard. It's proved with the following tag.

SIZE CHART (cm)

VES-S ESD Quilted vest	XS	S	M	L	XL	XXL	3XL	4XL	5XL
Chest	102	110	118	126	132	138	144	150	154
Length	64	66	68	70	72	74	76	78	80

Size tolerance (Before washing): 2%

VES-H ESD QUILTED VEST

WITH ZIPPER

FEATURES

- Available sizes: unisex XS - 5XL
- Inlined
- With zipper
- ESD symbol on chest
- 2 side pockets
- Not waterproof

Embroidered or printed company logo or text available upon request!

Individual custom made ESD Clothing also available!

AVAILABLE FABRICS AND COLOURS

CT35 FABRIC

W

Other fabric types and colours also available with MOQ.
Please send your request to: : sales@destsa.hu

ORDERING CODE

VES-H - CT35 - W L
style fabric colour size



Certified clothing according to the 2018 ESD standard. It's proved with the following tag.

SIZE CHART (cm)

VES-H ESD Quilted vest	XS	S	M	L	XL	XXL	3XL	4XL	5XL
Chest	102	110	118	126	132	138	144	150	154
Length	64	66	68	70	72	74	76	78	80

Size tolerance (Before washing): 2%



WH ESD WINTER HAT

FEATURES

- Available sizes: Unisex, one size
- With ESD Symbol
- Comfortable
- Warm and breathable

Embroidered or printed company logo or text available upon request!

Individual custom made ESD Clothing also available!

AVAILABLE FABRICS AND COLOURS

PS21 FABRIC



ORDERING CODE

WH - **PS21** - **NB**
style fabric colour



Certified clothing according to the 2018 ESD standard. It's proved with the following tag.

WS ESD SCARF

FEATURES

- Available sizes: Unisex, one size
- With ESD Symbol
- Comfortable
- Warm and breathable

Embroidered or printed company logo or text available upon request!

Individual custom made ESD Clothing also available!

AVAILABLE FABRICS AND COLOURS

PS21 FABRIC

BK

DG

GA

W

NB

RB

ORDERING CODE

WS - **PS21** - **NB**
 style fabric colour



Certified clothing according to the 2018 ESD standard. It's proved with the following tag.





EL ESD FLEECE

FEATURES

- Standard Sizes: From XS to XXL
- Unisex model with Zip
- 2 side pockets
- Sewed fabric ESD logo
- Extremely warm it is perfect for the Winter season

Embroidered or printed company logo or text available upon request!

Individual custom made ESD Clothing also available!

AVAILABLE FABRICS AND COLOURS

FL1 FABRIC

NB

LG

ORDERING CODE

EL - FL1 - NB L
 style fabric colour size

SIZE CHART (cm)

DETAILS ON PAGE 86.

EL ESD Fleece	XS	S	M	L	XL	XXL	3XL	4XL	5XL
Neck	47	48	49	50	51	52	53	54	55
Shoulders	41.5	43	44.5	46	47.5	49	50.5	52	53.5
Chest	50	52	54	56	58	60	62	64	66
Zip Length	64	65,5	67	68,5	70	71,5	73	74,5	76
Bottom	50	52	54	56	58	60	62	64	66
Fleece total length on back (no neck included)	66	68	70	72	74	76	78	80	82
Sleeve length	61	62	63	64	65	66	67	68	69

Size tolerance (Before washing): 2%



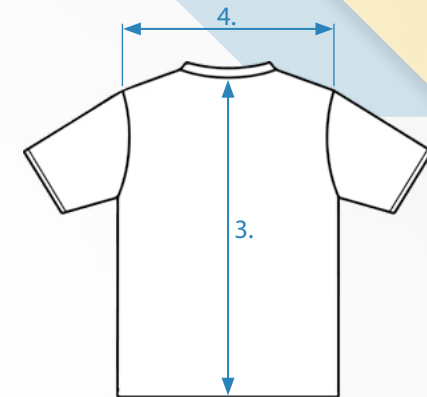
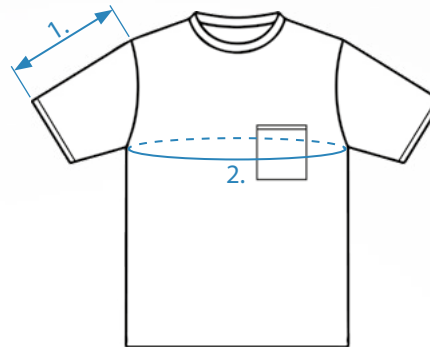
SIZE CHARTS

PGO PGZ TGO TGZ

TKO TKZ TLY

DESCRIPTION

1. Sleeve
2. Chest
3. Length
4. Shoulder

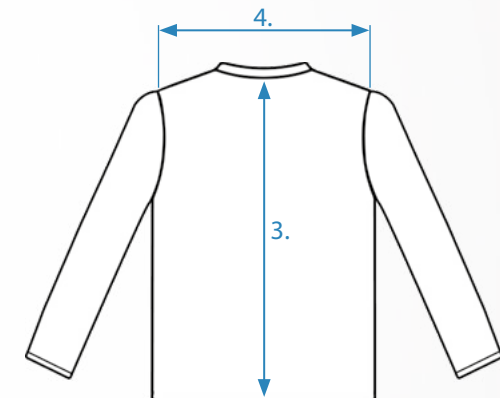
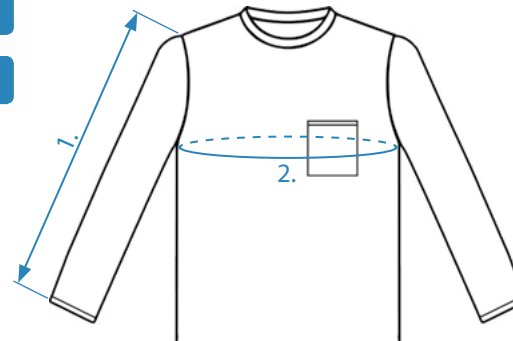


CAL CAS LGO LGZ LKO LKZ

QGO QGZ SGS SKS SWS WJ

DESCRIPTION

1. Sleeve
2. Chest
3. Length
4. Shoulder

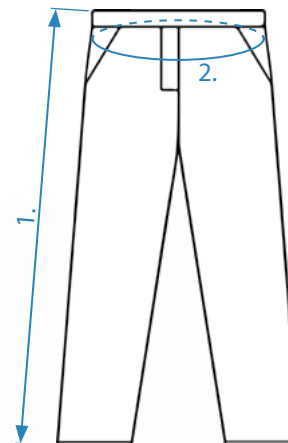


ET ETF NT NTF

OT RGA WN

DESCRIPTION

1. Length external
2. Hip
3. Waist

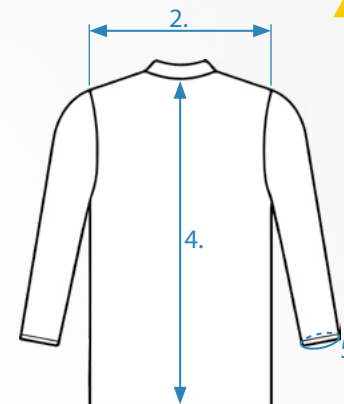
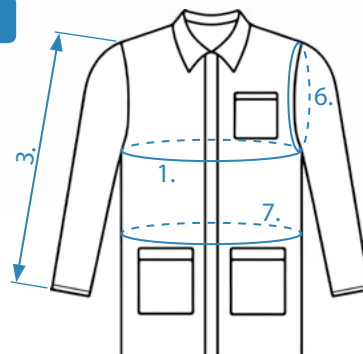


EFL EFS EFX ESL ESS ESX OJ

PF1 PS1 PF2 PS2 PF3 PS3

DESCRIPTION

- | | |
|-------------|---------------------|
| 1. Chest | 5. Cuff |
| 2. Shoulder | 6. Shoulder outline |
| 3. Sleeve | 7. Hip |
| 4. Length | |

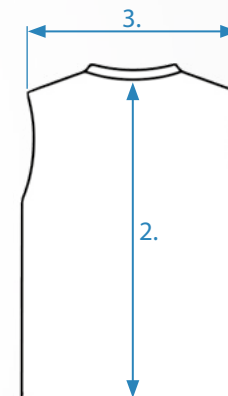
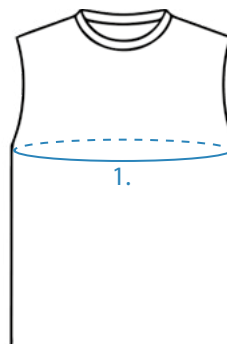


HIV SGW SWW

VES-H VES-S WW

DESCRIPTION

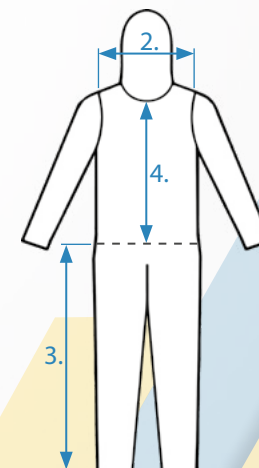
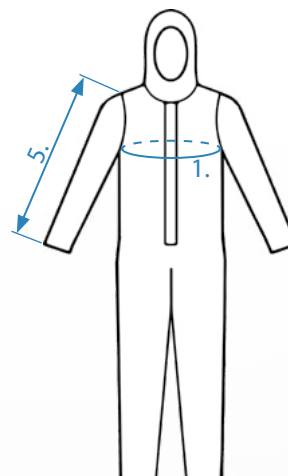
- | |
|-------------|
| 1. Chest |
| 2. Length |
| 3. Shoulder |



OLL

DESCRIPTION

- | | |
|-------------------------------|------------------------------|
| 1. Chest | 4. Length from neck to waist |
| 2. Shoulder | 5. Sleeve |
| 3. Length external from waist | |





LOGO DESIGN

There is a possibility to give an individual look to our garments with your company logo. High quality embroidery or printing also available.

Please send your logo in *.jpg forma via e-mail, we will prepare our offer to you.

NOTES

This image shows a blank sheet of white paper with horizontal blue lines, resembling notebook paper. The lines are evenly spaced and run across the width of the page. In the bottom right corner, there is a decorative graphic consisting of overlapping geometric shapes in light blue and yellow, creating a folded or layered effect. The background behind the paper is a soft, out-of-focus grey.



D és Tsa. Bt.

Office and Warehouse:
2600 Vác, Gálcsék u. 8-10.

Phone: +36 27 502 555

Email: sales@destsa.hu

Web: www.dlb.hu