

**ESD TESTERS**

**ESD INSTRUMENTS**

**ESD ENTRANCE SYSTEMS**



Global **ESD** Solutions

**DLB CATALOGUE**

**2020**



+36 27 502 555



[sales@destsa.hu](mailto:sales@destsa.hu)



[www.dlb.hu](http://www.dlb.hu) | [www.destsa.hu](http://www.destsa.hu)

## ENTRANCE SYSTEMS WITH ESD TESTERS

### SAFETY AND QUICKNESS

The AIJGO testers make 2 testing processes per sec. Left foot, Right foot and wrist strap tests have different testing circles but the tester make them at the same time. When the 2 testing processes have Pass results only this case the tester give Pass information. This double testing mode provides high safety testing results.

### ACCURACY AND RELIABILITY

The AIJGO testers use 100 V test voltage to avoid false test results. Under 100V test voltage the test results are not safety because of the dirt and the contamination on the sole of the ESD shoes or heel grounders. it can lose false test results. The 100V test voltage provides a reliable and accurate tester.

### VERSATILE AND FLEXIBLE

All AIJGO testers have Relay Output to open any kind of entrance gate (tripod turnstile, swing gate, wing barrier,...). Not need to change the tester if entrance gate is required to install. The tester have to be connected only by a cable to the gate.



## LIGHT BAR SYSTEM

This unique system with the LED lighting signal is an ideal solution for high volume of entrances where the quickness and safety is very important. The high damaging-resistant construction with the steel touch-button can prevent the frequent failures of any kind of push-button. The operators only have to touch the button, they do not need to push it. The LIGHT BAR system is developed for multinational companies which require many thousand of entrance per day. The 12 pcs energy saving LED have strong visual effect for the operator to inform the test result. It can distinguish the test result of the wrist strap, left and right foot (Pass – Green, Fail – Red):

### LIGHT BAR System standby mode



### LIGHT BAR System working modes \*

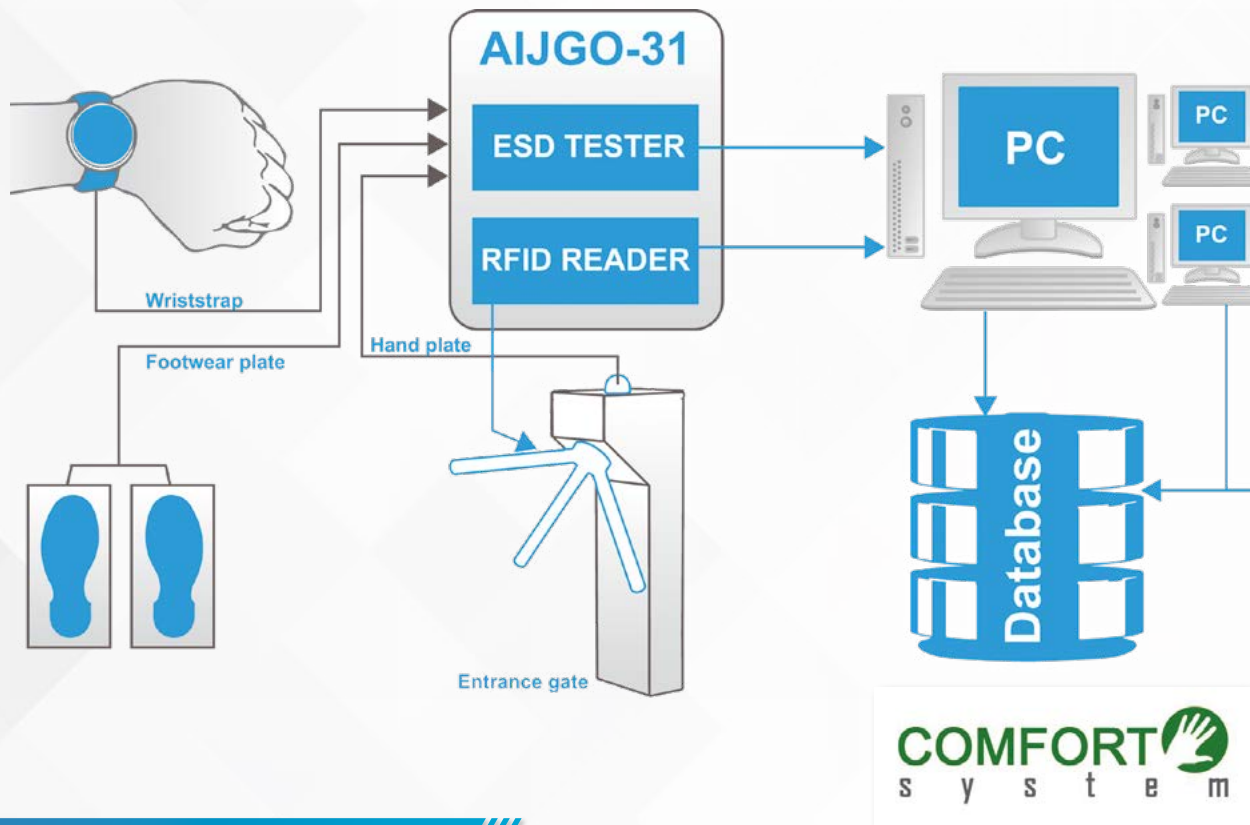
WS: OK	WS: FAILED	WS: OK	WS: OK	WS: FAILED	WS: OK	WS: FAILED	WS: FAILED
LF: OK	LF: OK	LF: FAILED	LF: OK	LF: FAILED	LF: FAILED	LF: OK	LF: FAILED
RF: OK	RF: OK	RF: OK	RF: FAILED	RF: FAILED	RF: FAILED	RF: FAILED	RF: OK

\* WS: wrist strap, LF: left feet, RF: right feet



## COMFORT SYSTEM

This system is a perfect choice where the personal identification is an important side of the entrance process to the ESD area. The identification is detected by a RFID reader where the operators use a Personal Chip Card. The test results and the identification data are transferred to a PC which has a Management Software. It makes to read and save the data possible, furthermore to set parameters. The COMFORT system provides a fully automatic solution for entrance to the ESD area and the data- processing (personal identification, test results).



### RFID READER

It can read the information from the Personal Chip Card which contains the personal identification and the test method on the basis of the tester make the test (Only footwear testing or footwear and wrist strap combined testing or VIP). The test starts after the card reading in any case so the operator cannot entry to the ESD area without identification after a successful test.

### MANAGEMENT SOFTWARE

**Database:** The most important part of the system is the MySQL database, and it's server. Every other part require connection to the server to able to work. It contains data of test results, store data, personal data, and many other information. When the test system shipped, the database placed always to the tester controller PC. On this way the tester can immediately work, even without LAN. It handles the identification data of the operators, uploading the operators's data from data base or manually. Test method choosing to the operators (Only footwear testing or footwear and wrist strap combined testing or VIP). The software controls the AIJGO-31LB/ALU tester. It can control max. 72 pcs tester and 24 pcs PC. It saves the entrance data to local .csv file (compatible with EXCEL and text editors). Automatically It cuts now log file every day. Acceptance limits changeable by the software. If the PC is connected to LAN network, the Management software is available on the internet.

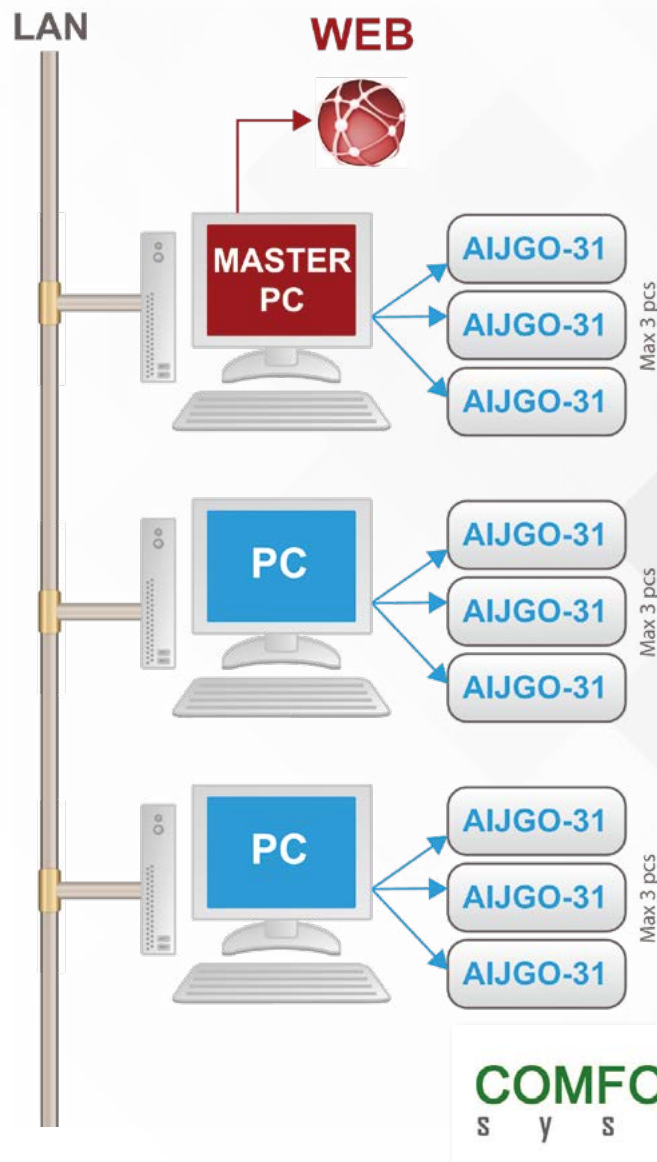


## NETWORK SOLUTION

If the ESD area has more than one entrance and personal identification needed in this case more ESD testers are required with RFID reader to all entrance. There is possibility to connect the testers and PC's into the same network and to manage the same software. Max. 3 pcs AIJGO-31LB/ALU testers are operated by one PC and Management Software.(Max. distance between the PC and tester is 100 m).



If more that 3 AIJGO-31LB/ALU testers are needed to connect in this case LAN network required: Max. 24 pcs PC are handle in the LAN network so Max. 72 pcs AIJGO-31LB/ALU testers are possible to connect.



## COMPLEX SYSTEM

This system provides an „all in one“ solution with our tripod turnstile. It is a „build-in“ construction because the AIJGO testers and Dual Foot Electrode are built in and installed into the gate. It is not required any extra installation knowledge. Properties of the gate:

- Manual rotation with mechanical support
- Rotation blockable electrically
- Mechanical brake system
- Electrically controlled arm fall system (fire alarm)
- In this case power cut, the arm system freely rotate to give fast transit
- Indoor use only



**COMPLEX**  
s y s t e m



# ENTRANCE SYSTEMS

## AIJGO-22LB/ALU LIGHT BAR FOOTWEAR & WRIST STRAP TESTER WITH DUAL FOOT ELECTRODE

The AIJGO-22LB/ALU is an easy usable Footwear & Wrist strap tester with LIGHT BAR system to entrance of EPA area. It is an ideal solution for high volume of entrances where the quickness and safety is very important. High damaging-resistant construction with touch-button. It is versatile tester because you can choose the right measuring methods according to entrance regulation: Only footwear testing or footwear and wrist strap combined testing. You have to make only one test at the same time for the left and right foot because of the dual foot electrode. It can be connected to any kind of entrance gate (tripod turnstile, swing gate, wing barrier,...) with a relay output. It can be installed on the wall or with stand to the floor.

- Footwear and Wrist Strap Tester for ESD area entrance
- Light (LED) and sound signal for the pass and faulty test, results separately (Wrist Strap - Left foot - Right foot)
- Both foot and wrist strap testing at the same time
- Dual foot electrode to test the right and left foot separately
- Compliance with IEC 61340-5-1 and ANSI/ESD S20.20

Test selector	Only footwear testing or Footwear and wrist strap combined testing
Resistance limits set by Software	Footwear: 100 K $\Omega$ - 35 M $\Omega$ /100 M $\Omega$ - Wrist Strap: 750 K $\Omega$ - 35 M $\Omega$
Test voltage	100V
Wrist Strap connection	Combined connection possibility, 4 mm banan plug or 10 mm snap-fastener
Relay Output to open Entrance gate	0,5A/60V
Power supply	12V DC
Tester Size/Weight	215 x 195 x 65 mm / 0.75 kg
Tester Size/Weight with stand	500x490x1100 mm / 18 kg



AIJGO-22LB/ALU



AIJGO-22LB/ALU + AIJGO-22LB/STA

ORDER CODE	DESCRIPTION
AIJGO-22LB/ALU	Footwear & Wrist Strap Tester with Dual Foot Electrode
AIJGO-22LB/STA	Stand for AIJGO-22/ALU
AIJGO-22LB/WAL	Wall console



## AIJGO-22LB/ALU/LCD LIGHT BAR FOOTWEAR & WRIST STRAP TESTER WITH DUAL FOOT ELECTRODE

The AIJGO-22LB/ALU is an easy usable Footwear & Wrist strap tester with LIGHT BAR system to entrance of EPA area. It is an ideal solution for high volume of entrances where the quickness and safety is very important. High damaging-resistant construction with touch-button. It is versatile tester because you can choose the right measuring methods according to entrance regulation: Only footwear testing or footwear and wrist strap combined testing. You have to make only one test at the same time for the left and right foot because of the dual foot electrode. The built-in LCD display can show the results. It can be connected to any kind of entrance gate (tripod turnstile, swing gate, wing barrier,...) with a relay output. It can be installed on the wall or with stand to the floor.

- Footwear and Wrist Strap Tester for ESD area entrance
- Light (LED) and sound signal for the pass and faulty test, results separately (Wrist Strap - Left foot - Right foot)
- Both foot and wrist strap testing at the same time
- Dual foot electrode to test the right and left foot separately
- Compliance with IEC 61340-5-1 and ANSI/ESD S20.20

Test selector	Only footwear testing or Footwear and wrist strap combined testing
LCD Display	Show the results
Resistance limits set by Software	Footwear: 100 K $\Omega$ - 35 M $\Omega$ /100 M $\Omega$ - Wrist Strap: 750 K $\Omega$ - 35 M $\Omega$
Test voltage	100V
Wrist Strap connection	Combined connection possibility, 4 mm banan plug or 10 mm snap-fastener
Relay Output to open Entrance gate	0,5A/60V
Power supply	12V DC
Tester Size/Weight	215 x 195 x 65 mm / 0.75 kg
Tester Size/Weight with stand	500x490x1100 mm / 18 kg



AIJGO-22LB/ALU/LCD



Test PASSED  
WRT 778 K  
LFT 408 K  
RGT 475 K

Test FAILED  
WRT 57 M  
LFT 40 M  
RGT 41 M



AIJGO-22LB/ALU/LCD + AIJGO-22LB/STA

ORDER CODE	DESCRIPTION
AIJGO-22LB/ALU/LCD	Footwear & Wrist Strap Tester with Dual Foot Electrode and LCD Display
AIJGO-22LB/STA	Stand for AIJGO-22/ALU
AIJGO-22LB/WAL	Wall console

## AIJGO-22LB/COMP LIGHT BAR & COMPLEX ESD ENTRANCE SYSTEM

The AIJGO-22LB/COMP is an „all in one“ ESD entrance solution: AIJGO-22LB/ALU Footwear & Wrist Strap Tester with Dual Foot Electrode + AS 110 Entrance gate

The AIJGO-22LB/ALU is an easy usable Footwear & Wrist strap tester with LIGHT BAR system to entrance of EPA area. It is an ideal solution for high volume of entrances where the quickness and safety is very important. High damaging-resistant construction with touch-button. It is versatile tester because you can choose the right measuring methods according to entrance regulation: Only footwear testing or footwear and wrist strap combined testing. You have to make only one test at the same time for the left and right foot because of the dual foot electrode. COMPLEX system: The AIJGO-22LB/ALU tester is build in our AS110 tripod turnstile.

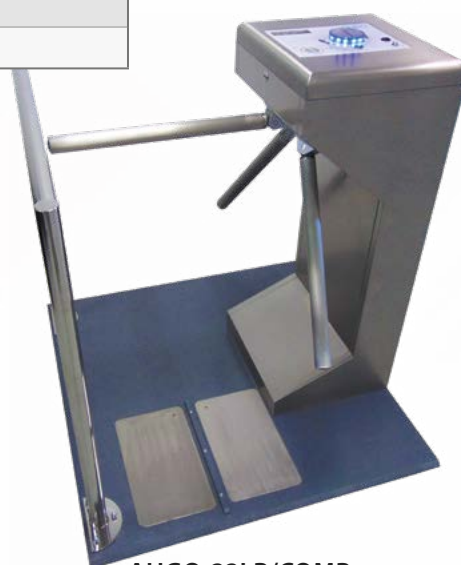
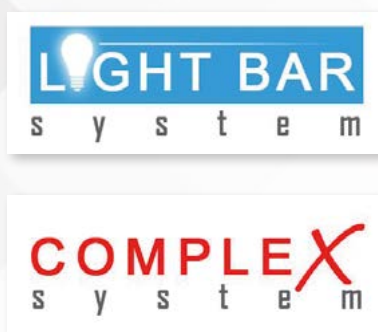
### MAIN PROPERTIES

- Footwear and Wrist Strap Tester for ESD area entrance
- LIGHT BAR system with sound to signal for the pass and faulty test, results separately (Wrist Strap - Left foot - Right foot)
- Both foot and wrist strap testing at the same time
- Dual foot electrode to test the right and left foot separately
- Compliance with IEC 61340-5-1 and ANSI/ESD S20.20

Test selector	Only footwear testing or Footwear and wrist strap combined testing
Resistance limits set by Software	Footwear: 100 K $\Omega$ - 35 M $\Omega$ /100 M $\Omega$ - Wrist Strap: 750 K $\Omega$ - 35 M $\Omega$
Test voltage	100V
Wrist Strap connection	combined connection possibility, 4 mm banan plug or 10 mm snap-fastener
Relay Output to open Entrance gate	0,5A/60V
Power supply	230V AC
Tester Size/Weight	1000x950x1028 mm / 80 kg
Barrier Size/Weight	825x884 mm / 3,5 kg



AIJGO-BAR1



AIJGO-22LB/COMP

ORDER CODE	DESCRIPTION
AIJGO-22LB/COMP	LIGHT BAR & COMPLEX Footwear & Wrist Strap Tester with Dual Foot Electrode + AS110 Entrance gate
AIJGO-BAR1	Barrier for AIJGO22LB/COMP

## AIJGO-31LB/ALU LIGHT BAR & COMFORT FOOTWEAR & WRIST STRAP TESTER WITH DUAL FOOT ELECTRODE + RFID READER + ALL IN ONE PC + MANAGEMENT SOFTWARE

The AIJGO-31LB/ALU is an easy usable Footwear & Wrist strap tester with LIGHT BAR & COMFORT system to entrance of EPA area.

\* The Management Software has to be ordered together with the AIJGO-31LB/ALU but if more testers are connected a network in this case please do not hesitate to contact us with your network plan for a quotation!

### LIGHT BAR SYSTEM

It is an ideal solution for high volume of entrances where the quickness and safety is very important. High damaging- resistant construction with touch-button.

### COMFORT SYSTEM

This tester provides very easy entrance with RFID reader which make the personal identification and transfer the data (personal and measuring data) to a PC. The Management software handles the personal identification, test methods and results. The data can be read and saved from the PC. If the PC is connected to LAN network, the Management software is available on the internet. Many AIJGO-31LB/ALU testers are possible to be connected a network.

It is versatile tester because you can choose the right measuring methods by the Management software personally with the (Personal Chip Card) according to entrance regulation: Only footwear testing or footwear and wrist strap combined testing or VIP. You have to make only one test at the same time for the left and right foot because of the dual foot electrode. It can be connected to any kind of entrance gate (tripod turnstile, swing gate, wing barrier,...) with a relay output.

### MAIN PROPERTIES

- Footwear and Wrist Strap Tester for ESD area entrance
- LIGHT BAR system with sound to signal for the pass and faulty test, results separately (Wrist Strap - Left foot - Right foot)
- Both foot and wrist strap testing at the same time
- Dual foot electrode to test the right and left foot separately
- Compliance with IEC 61340-5-1 and ANSI/ESD S20.20

Test selector	Only footwear testing or Footwear and wrist strap combined testing
Resistance limits set by Software	Footwear 100 K $\Omega$ - 35 M $\Omega$ /100 M $\Omega$ Wrist Strap: 750 K $\Omega$ - 35 M $\Omega$
Test voltage	100V
Wrist Strap connection	Combined connection possibility: 4 mm banan plug or 10 mm snap-fastener
Relay Output to open Entrance gate	0,5A/60V
Operation system	Windows 10 Embedded
PC connection	RS 232
Power supply	12V DC
Tester Size/Weight	215 x 195 x 65 mm / 0.75 kg
Tester Size/Weight with stand	500x490x1334 mm / 20 kg

## RFID READER

Multifunctional RFID Reader that can handle most of the known RFID standards

### **LF – low frequency – readers (125/134 kHz):**

- eMarine (EM4100,4102,4200)
- HID ProxCard II
- Indala
- Indala Kantech
- ISO18000
- ISO 11784/85 HDX
- ISO11784/85 FDX(-B)
- TI RFID (Tiris, pl. RI-TRP-R4FF, RI-TRP-W4FF)
- Casi Rusco
- HITAG 1/S
- HITAG 2

### **HF – high frequency – readers (13,56 MHz):**

#### **ISO-14443A type of encoders:**

- Mifare Classic (1k/4k)
- Mifare Ultralight
- Mifare DESFire
- Mifare Plus
- Mifare ProX
- Mifare SmartMX

#### **ISO-15693 encoders type:**

- Texas Instruments TAG-IT Plus
- Texas Instruments TAG-IT Standard
- Texas Instruments TAG-IT Pro
- PicoPass
- HID iClass
- Legic Advant

#### **ISO-14443B type of encoders:**

- SRI512,SRT512,SRI4K,SRIX4k
- ISO-14443B type of card emulation

#### **ISO-18092/NFC type of communication:**

- P2P active communication under NFCIP-1
- NFC card emulation (passive)
- Mobile phones with NFC function (Android, iOS, Windows Mobile) in the previously listed modes

Existing work time recording and access control system can be coordinated (separate development, under an agreement)



## MANAGEMENT SOFTWARE

- Database on MySQL base
- Save the entrance data to local .csv file (compatible with EXCEL and text editors)
- Automatically cut new log file every day
- Acceptance limits changeable

## COMPLETE SYSTEM

- AIJGO-31LB/ALU Footwear and Wrist Strap tester with Dual Foot electrode + RFID reader
- All in One PC
- CD with the Management Software and Drivers
- AC adapter



AIJGO-31LB/ALU



AIJGO-31LB/ALU/MON + AIJGO-31LB/STA

ORDER CODE	DESCRIPTION
AIJGO-31LB/ALU/MON	LIGHT BAR & COMFORT Footwear & Wrist Strap Tester with Dual Foot Electrode + RFID Reader + PC with monitor
AIJGO-31LB/SFW	Management Software for AIJGO-31LB/ALU
AIJGO-31LB/STA	Stand for AIJGO-31LB/ALU

## AIJGO-31LB/COMP LIGHT BAR & COMFORT & COMPLEX ESD ENTRANCE SYSTEM

The AIJGO-31LB/COMP is an „all in one“ ESD entrance solution: AIJGO-31LB/ALU Footwear & Wrist Strap Tester with Dual Foot Electrode + RFID reader + Management software + AS 110 Entrance gate:

\* The Management Software has to be ordered together with the AIJGO-31LB/COMP but if more testers are connected a network in this case please do not hesitate to contact us with your network plan for a quotation!

### LIGHT BAR SYSTEM

It is an ideal solution for high volume of entrances where the quickness and safety is very important. High damaging- resistant construction with touch-button.

### COMFORT SYSTEM

This tester provides very easy entrance with RFID reader which make the personal identification and transfer the data (personal and measuring data) to a PC. The Management software handles the personal identification, test methods and results. The data can be read and saved from the PC. If the PC is connected to LAN network, the Management software is available on the internet. Many AIJGO-31LB/ALU testers are possible to be connected a network.

### COMPLEX SYSTEM

The AIJGO-31LB/ALU tester is build in our AS110 tripod turnstile. This „all in one“ construction is available in the following version:

- With touch-screen monitor with build-in PC

It is versatile tester because you can choose the right measuring methods by the Management software personally with the (Personal Chip Card) according to entrance regulation: Only footwear testing or footwear and wrist strap combined testing or VIP. You have to make only one test at the same time for the left and right foot because of the dual foot electrode.

### MAIN PROPERTIES

- Footwear and Wrist Strap Tester for ESD area entrance
- LIGHT BAR system with sound to signal for the pass and faulty test, results separately (Wrist Strap - Left foot - Right foot)
- Both foot and wrist strap testing at the same time
- Dual foot electrode to test the right and left foot separately
- Compliance with IEC 61340-5-1 and ANSI/ESD S20.20

Resistance limits set by Software	Footwear 100 K $\Omega$ - 35 M $\Omega$ /100 M $\Omega$ Wrist Strap: 750 K $\Omega$ - 35 M $\Omega$
Test voltage	100V
Wrist Strap connection	Combined connection possibility: 4 mm banan plug or 10 mm snap-fastener
Operation system	Windows 10 Embedded
PC connection	RS 232
Power supply	230V AC
Tester Size/Weight	1000x950x1264 mm / 80 kg
Barrier Size/Weight	825x884 mm / 3,5 kg



## RFID READER

Multifunctional RFID Reader that can handle most of the known RFID standards

### **LF – low frequency – readers (125/134 kHz):**

- eMarine (EM4100,4102,4200)
- HID ProxCard II
- Indala
- Indala Kantech
- ISO18000
- ISO 11784/85 HDX
- ISO11784/85 FDX(-B)
- TI RFID (Tiris, pl. RI-TRP-R4FF, RI-TRP-W4FF)
- Casi Rusco
- HITAG 1/S
- HITAG 2

### **HF – high frequency – readers (13,56 MHz):**

#### **ISO-14443A type of encoders:**

- Mifare Classic (1k/4k)
- Mifare Ultralight
- Mifare DESFire
- Mifare Plus
- Mifare ProX
- Mifare SmartMX

#### **ISO-15693 type of encoders:**

- Texas Instruments TAG-IT Plus
- Texas Instruments TAG-IT Standard
- Texas Instruments TAG-IT Pro
- PicoPass
- HID iClass
- Legic Advant

#### **ISO-14443B type of encoders:**

- SRI512,SRT512,SRI4K,SRIX4k
- ISO-14443B type of card emulation

#### **ISO-18092/NFC type of communication:**

- P2P active communication under NFCIP-1
- NFC card emulation (passive)
- Mobile phones with NFC function (Android, iOS, Windows Mobile) in the previously listed modes

Existing work time recording and access control system can be coordinated (separate development, under an agreement)

## MANAGEMENT SOFTWARE

- Database on MySQL base
- Save the entrance data to local .csv file (compatible with EXCEL and text editors)
- Automatically cut now log file every day
- Acceptance limits changeable

## COMPLETE SYSTEM

- AIJGO-31LB/ALU Footwear and Wrist Strap tester with Dual Foot electrode + RFID reader
- All in One PC
- CD with the Management Software and Drivers
- AC adapter
- AS110 tripod turnstile



**LIGHT BAR**  
s y s t e m

**COMFORT**  
s y s t e m

**COMPLEX**  
s y s t e m

AIJGO-31LB/COMP2 + AIJGO-BAR1

ORDER CODE	DESCRIPTION
AIJGO-31LB/COMP2	LIGHT BAR & COMFORT & COMPLEX Footwear & Wrist Strap Tester with Dual Foot Electrode + RFID Reader + Touch-screen monitor with PC + AS110 Entrance gate
AIJGO-31LB/SFW	Management Software for AIJGO-31LB/ALU
AIJGO-BAR1	Barrier for AIJGO31LB/COMP



## AIJGO-32LB/ALU LIGHT BAR & COMFORT FOOTWEAR & WRIST STRAP TESTER WITH DUAL FOOT ELECTRODE + RFID READER

The AIJGO-32LB/ALU is an easy usable Footwear & Wrist strap tester with LIGHT BAR & COMFORT system to entrance of EPA area. This construction was design for those who wants to integrate the AIJGO ESD access control system into their existing systems (SAP, ORACLE, work time recording software, etc) Additionally for companies who produces and install complex access systems.

### LIGHT BAR SYSTEM

It is an ideal solution for high volume of entrances where the quickness and safety is very important. High damaging- resistant construction with touch-button.

### COMFORT SYSTEM

This tester provides very easy entrance with RFID reader which make the personal identification and transfer the data (personal and measuring data) to a PC. The Management software handles the personal identification, test methods and results. The data can be read and saved from the PC. If the PC is connected to LAN network, the Management software is available on the internet. Many AIJGO-32LB/ALU testers are possible to be connected a network.

It is versatile tester because you can choose the right measuring methods by the Management software personally with the (Personal Chip Card) according to entrance regulation: Only footwear testing or footwear and wrist strap combined testing or VIP. You have to make only one test at the same time for the left and right foot because of the dual foot electrode. It can be connected to any kind of entrance gate (tripod turnstile, swing gate, wing barrier,...) with a relay output.

### MAIN PROPERTIES

- Footwear and Wrist Strap Tester for ESD area entrance
- LIGHT BAR system with sound to signal for the pass and faulty test, results separately (Wrist Strap - Left foot - Right foot)
- Both foot and wrist strap testing at the same time
- Dual foot electrode to test the right and left foot separately
- Compliance with IEC 61340-5-1 and ANSI/ESD S20.20

Test selector	Only footwear testing or Footwear and wrist strap combined testing
Resistance limits set by Software	Footwear: 100 KΩ - 35 MΩ/100 MΩ Wrist strap: 750 KΩ - 35MΩ
Test voltage	100V
Wrist strap connection	Combined connection possibility: 4 mm banan plug or 10 mm snap-fastener
Relay Output to open entrance gate	0,5A/60V
PC connection	RS 232 (through D-SUB 9 cabel)
Power supply	12V DC
Tester Size/Weight	215 x 195 x 65 mm / 0.75 kg
Tester Size/Weight with stand	500x490x1100 mm / 18 kg

## RFID READER

Multifunctional RFID Reader that can handle most of the known RFID standards

### **LF – low frequency – readers (125/134 kHz):**

- eMarine (EM4100,4102,4200)
- HID ProxCard II
- Indala
- Indala Kantech
- ISO18000
- ISO 11784/85 HDX
- ISO11784/85 FDX(-B)
- TI RFID (Tiris, pl. RI-TRP-R4FF, RI-TRP-W4FF)
- Casi Rusco
- HITAG 1/S
- HITAG 2

### **HF – high frequency – readers (13,56 MHz):**

#### **ISO-14443A type of encoders:**

- Mifare Classic (1k/4k)
- Mifare Ultralight
- Mifare DESFire
- Mifare Plus
- Mifare ProX
- Mifare SmartMX

#### **ISO-15693 encoders type:**

- Texas Instruments TAG-IT Plus
- Texas Instruments TAG-IT Standard
- Texas Instruments TAG-IT Pro
- PicoPass
- HID iClass
- Legic Advant

#### **ISO-14443B type of encoders:**

- SRI512,SRT512,SRI4K,SRIX4k
- ISO-14443B type of card emulation

#### **ISO-18092/NFC type of communication:**

- P2P active communication under NFCIP-1
- NFC card emulation (passive)
- Mobile phones with NFC function (Android, iOS, Windows Mobile) in the previously listed modes



## COMPLETE SYSTEM

- AIJGO-32LB/ALU footwear and wrist straps tester with dual foot electrode + RFID reader
- AC adapter



AIJGO-32LB/ALU



AIJGO-32LB/ALU + AIJGO-32LB/STA

ORDER CODE	DESCRIPTION
AIJGO-32LB/ALU	LIGHT BAR & COMPLEX Footwear & Wrist strap Testet with dual foot Electrode + RFID Reader (Without PC and Management software)
AIJGO-32LB/STA	Stand for AIJGO-32LB/ALU

## AIJGO-32LB/ALU/COMP LIGHT BAR & COMFORT & COMPLEX FOOTWEAR & WRIST STRAP TESTER WITH DUAL FOOT ELECTRODE + RFID READER

The AIJGO-32LB/ALU is an easy usable Footwear & Wrist strap tester with LIGHT BAR & COMFORT system to entrance of EPA area combined with entrance gate. This construction was design for those who wants to integrate the AIJGO ESD access control system into their exisiting systems (SAP, ORACLE, work time recording software, etc) Addiotionally for companies who produces and install complex access systems.

### LIGHT BAR SYSTEM

It is an ideal solution for high volume of entrances where the quickness and safety is very important. High damaging- resistant construction with touch-button.

### COMFORT SYSTEM

This tester provides very easy entrance with RFID reader which make the personal identification and transfer the data (personal and measuring data) to a PC. The Management software handles the personal identification, test methods and results. The data can be read and saved from the PC. If the PC is connected to LAN network, the Management software is available on the internet. Many AIJGO-32LB/ALU testers are possible to be connected a network.

It is versatile tester because you can choose the right measuring methods by the Management software personally with the (Personal Chip Card) according to entrance regulation: Only footwear testing or footwear and wrist strap combined testing or VIP. You have to make only one test at the same time for the left and right foot because of the dual foot electrode. It can be connected to any kind of entrance gate (tripod turnstile, swing gate, wing barrier,...) with a relay output.

### COMPLEX SYSTEM

AIJGO-32LB/ALU tester built in a AS 110 turnstile gate.

Versatile tester that uses a Personal Chip Card to select a measurement method according to the entry person and the entrance control: Only a footwear test or a footwear and wrist straps combined test or VIP. Thanks to the dual leg electrode, only one test is performed that simultaneously measures the right and left legs.

### MAIN PROPOERTIES

- Footwear and Wrist Strap Tester for ESD area entrance
- LIGHT BAR system with sound to signal for the pass and faulty test, results separately (Wrist Strap - Left foot - Right foot)
- Both foot and wrist strap testing at the same time
- Dual foot electrode to test the right and left foot separately
- Compliance with IEC 61340-5-1 and ANSI/ESD S20.20

Test selector	Only footwear testing or Footwear and wrist strap combined testing
Resistance limits set by Software	Footwear: 100 KΩ - 35 MΩ/100 MΩ Wrist strap: 750 KΩ - 35MΩ
Test voltage	100V
Wrist strap connection	Combined connection possibility: 4 mm banan plug or 10 mm snap-fastener
PC connection	with RS 232 (through D-SUB 9 cabel)
Power supply	12V DC
Tester Size/Weight	1000x950x1028 mm / 80 kg
Barrier Size/Weight	825x884 mm / 3,5 kg





## RFID READER

Multifunctional RFID Reader that can handle most of the known RFID standards

### **LF – low frequency – readers (125/134 kHz):**

- eMarine (EM4100,4102,4200)
- HID ProxCard II
- Indala
- Indala Kantech
- ISO18000
- ISO 11784/85 HDX
- ISO11784/85 FDX(-B)
- TI RFID (Tiris, pl. RI-TRP-R4FF, RI-TRP-W4FF)
- Casi Rusco
- HITAG 1/S
- HITAG 2

### **HF – high frequency – readers (13,56 MHz):**

#### **ISO-14443A type of encoders:**

- Mifare Classic (1k/4k)
- Mifare Ultralight
- Mifare DESFire
- Mifare Plus
- Mifare ProX
- Mifare SmartMX

#### **ISO-15693 encoders type:**

- Texas Instruments TAG-IT Plus
- Texas Instruments TAG-IT Standard
- Texas Instruments TAG-IT Pro
- PicoPass
- HID iClass
- Legic Advant

#### **ISO-14443B type of encoders:**

- SRI512,SRT512,SRI4K,SRIX4k
- ISO-14443B type of card emulation

#### **ISO-18092/NFC type of communication:**

- P2P active communication under NFCIP-1
- NFC card emulation (passive)
- Mobile phones with NFC function (Android, iOS, Windows Mobile) in the previously listed modes

## COMPLETE SYSTEM

- > AIJGO-32LB/ALU Footwear and wrist straps tester with dual foot electrode + RFID olvasó
- > Entrance gate
- > AC adapter



**LIGHT BAR**  
s y s t e m

**COMFORT**  
s y s t e m

**COMPLEX**  
s y s t e m

AIJGO-32LB/COMP + AIJGO-BAR1

ORDER CODE	DESCRIPTION
AIJGO-32LB/COMP	LIGHT BAR & COMFORT & COMPLEX Footwear & Wrist straps tester with dual foot electrode + RFID reader + AS110 turnstile entrance gate (Without any PC and Management Software )
AIJGO-BAR1	Barrier for AIJGO-32LB/COMP entrance system

## AIJGO-34LB ESD ENTRANCE SYSTEM

- Footwear and wrist strap tester to enter EPA
- Both foot and wrist strap testing at the same time
- Tester is applicable to test groundable ESD lab coat
- Test starting with touching the metal touch button
- 7" 1024x600 pixels LCD screen to show measured values and instruction
- LED Light which shows test results
- Identification of users with RFID technology
- RFID reader can read most common RFID card standards in 125/134 kHz and 13,56MHz frequency
- Measured values are stored in internal SD card
- Tester is configurable via LAN with RJ45 cable
- Configuration and data files stored in XML file format

<b>Resistance limits</b>	<b>Footwear:</b> 100kΩ ± 20% - 35MΩ/100MΩ ± 10% <b>Wrist strap:</b> 750kΩ ± 20% - 35MΩ ± 10% Adjustable upper resistance limits between 35MΩ and 100MΩ
<b>Test voltage</b>	100V DC
	Wrist strap connection with 4 mm banana plug and 10 mm snap fastener combined connection point
<b>34LB/ALU Tester Size/Weight</b>	315x195x65 mm / 1 kg
<b>34LB/ALU Tester Size/Weight with stand</b>	500x490x1100 mm 18 kg
<b>34LB/COMP Tester Size/Weight</b>	1000x950x1028 mm 80 kg
<b>Power supply</b>	220V/50Hz
<b>Relay outputs to open entrance gate</b>	0,5A/60V



AIJGO-34-LCD

### AIJGO-34LB/ALU Light Bar & Comfort Footwear and Wrist Strap Tester with dual foot electrode

+ RFID reader + LCD Display + Software + Stand (optional)



### AIJGO-34LB/COMP Light Bar & Comfort & Complex ESD Entrance System: Footwear & Wrist Strap Tester with Dual Foot Electrode

+ RFID reader + Software + AS 111 Entrance gate + Barrier (optional)



ORDER CODE	DESCRIPTION
AIJGO-34LB/ALU	Light Bar & Comfort Footwear and Wrist Strap Tester with dual foot electrode + RFID reader + LCD Display + Software
AIJGO-34LB/STA	Stand for AIJGO-34LB/ALU
AIJGO-34LB/COMP	Light Bar & Comfort & Complex ESD Entrance System: AIJGO-34LB/ALU Footwear & Wrist Strap Tester with Dual Foot Electrode + RFID reader + Software + AS 111 Entrance gate
AIJGO-BAR1	Barrier for AIJGO34LB/COMP (825x884 mm / 3,5 kg)

## AIJGO-25LB ESD TOUCH FREE ESD ENTRANCE SYSTEM

**TOUCH  
FREE!**

### AIJGO-25LB/ALU LIGHT BAR TOUCH FREE ESD ENTRANCE SYSTEM FOOTWEAR TESTER WITH DUAL FOOT ELECTRODE

#### MAIN PROPERTIES

- Footwear tester to enter EPA
- Only footwear test between left and right footwear
- Test starting with stepping on foot electrodes without using hands
- LED Light and sound signal which shows test results

Resistance limits	<b>Footwear test lower limit</b> 100kΩ ± 20% <b>Footwear test upper limit</b> can be adjusted to 70MΩ ± 10% or 200MΩ ± 10%
Test voltage	100V DC
Tester Size/Weight	215 x 195 x 65 mm / 0.75 kg
Tester Size/Weight with stand	500x490x1100 mm / 18 kg
Power supply	12V DC



ORDER CODE	DESCRIPTION
AIJGO-25LB/ALU	Light Bar ESD Entrance System: AIJGO-25LB/ALU Footwear Tester with Dual Foot Electrode
AIJGO-22LB/STA	Stand for AIJGO-25/ALU
AIJGO-22LB/WAL	Wall console for AIJGO-25/ALU



## AIJGO-25LB ESD TOUCH FREE ESD ENTRANCE SYSTEM

**TOUCH  
FREE!**

### AIJGO-25LB/COMP LIGHT BAR & COMPLEX ESD ENTRANCE SYSTEM

FOOTWEAR TESTER WITH DUAL FOOT ELECTRODE + AS 111 Entrance gate + Barrier (optional)

### MAIN PROPERTIES

- Footwear tester to enter EPA
- Only footwear test between left and right footwear
- Test starting with stepping on foot electrodes without using hands
- LED Light and sound signal which shows test results

Resistance limits	<b>Footwear test lower limit</b> 100kΩ ± 20% <b>Footwear test upper limit</b> can be adjusted to 70MΩ ± 10% or 200MΩ ± 10%
Test voltage	100V DC
Tester Size/Weight	1000x950x1030 mm / 80 kg
Power supply	220V/50Hz

**LIGHT BAR**  
 s y s t e m

**COMPLEX**  
 s y s t e m


ORDER CODE	DESCRIPTION
AIJGO-25LB/COMP	Light Bar & Complex ESD Entrance System: AIJGO-25LB/COMP Footwear Tester with Dual Foot Electrode + AS 111 Entrance gate
AIJGO-BAR1	Barrier for AIJGO-25LB/COMP (825x884 mm / 3,5 kg)

## AIJGO-24LB/ALU DUAL FOOTWEAR & WRIST STRAP TESTER

### MAIN PROPERTIES

- Footwear and wrist strap tester for ESD area entrance
- Both foot and wrist strap testing at the same time
- LED Light and sound signal which shows test results

Resistance limits	<b>Footwear:</b> $100\text{k}\Omega \pm 20\%$ - $35\text{M}\Omega/100\text{M}\Omega \pm 10\%$ <b>Wrist strap:</b> $750\text{k}\Omega \pm 20\%$ - $35\text{M}\Omega \pm 10\%$ Adjustable upper resistance limits of footwear between $35\text{M}\Omega$ and $100\text{M}\Omega$ at the bottom of the tester
Test voltage	100V DC
Tester Size/Weight	115x195x65 mm / 0.55 kg
Power supply	220V/50Hz
Relay output	0,5A/60V



ORDER CODE	DESCRIPTION
AIJGO-24LB/ALU	Dual Footwear & Wrist Strap Tester with foot electrode



# ESD INSTRUMENTS AND TESTERS



## RESISTANCE DECAD

Resistance decad for calibration several testers



## WRIST STRAP MONITOR WITH LAMP CONNECTION (ENERGY SAVING)

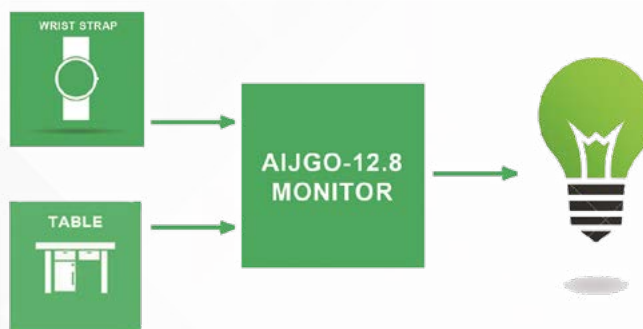


Wrist strap monitor for workmanship in ESD safe, Wrist strap and ESD safe workplace continuous testing, Light and sound signal indication of test result, For one wrist strap.

**Resistance limits:** Red < 100 kOhm < Green < 30 MOhm < Red  
**Testvoltage:** 5V

**The connected lamp of the working station only can give light if the working surface is suitable for the ESD standard and the wrist strap is connected to the monitor!**

**In this case you can reach significant ENERGY SAVING.**



## ADDITIONALS FOR ESD MEASURING



AIJGO-2



AIJGO-3



AIJGO-13



AIJGO-4

ORDER CODE	TYPE
AIJGO-2	Counter electrode
AIJGO-3	Glove measuring electrode
AIJGO-4	Grounding electrode, 25 cm length
AIJGO-4.1	Grounding electrode, 50 cm length
AIJGO-4.2	Grounding electrode, 100 cm length
AIJGO-13	Hand electrode

ORDER CODE	SIZE (mm)	WEIGHT	TYPE
AIJGO-12.8	130x90x45	0,3 kg	Wrist strap monitor

## WRIST STRAP MONITOR



Wrist strap monitor for workmanship in ESD safe, Wrist strap and ESD safe workplace continuous testing, Light and sound signal indication of test result, For one wrist strap.

**Resistance limits:** Red < 100 kOhm < Green < 30 MOhm < Red  
**Testvoltage:** 5 V



ORDER CODE	SIZE
AIJGO-12.1	100 x 50 x 25 mm

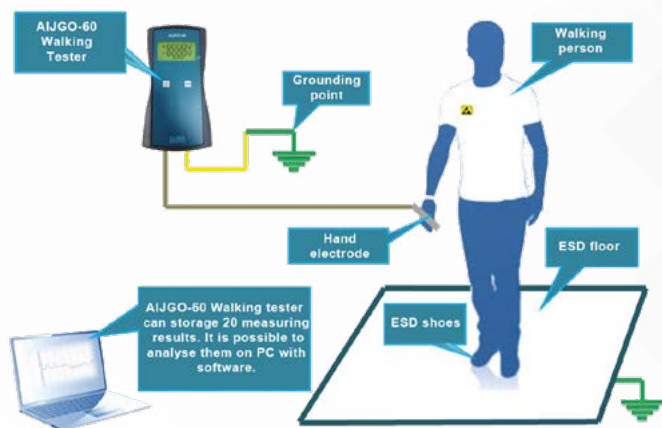
## WALKING TESTER



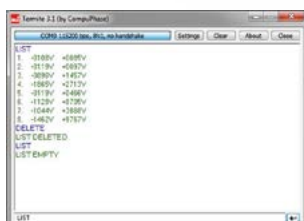
Az AIJGO-60 Walking tester is suitable for measuring the electrostatic charge of a walking person. The measured electrostatic voltages are shown on a LCD display in a numerical and graphical way.



Dimension	93 x 185 x 35 mm (SZ x H x M)
Weight	350g
Voltage range	$\pm 2000$ V
Accuracy	< 10%
Sampling rate	250 $\mu$ s
Data output	+5V
Display	Graphic 128 x 64 pixel; LED Backlight
Power	4 pcs 1,5 V AA accumulator
Usage	approx 12-14 hours



Az AIJGO-60 Walking tester can storage 20 measuring results. The results are possible to analyse on a PC.



## RESISTANCE METER



Az AIJGO-61 resistance meter is combined with temperature and humidity meter which is suitable for making ESD measuring according to the ESD standards. The results are shown on a LCD display in numerical way.



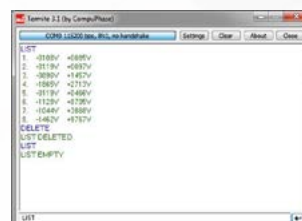
Az AIJGO-61 is an „All in One“ resistance meter because the resistance range is 0 Ohm – 1 TOhm, so it is possible use for a usual resistance meter and ESD resistance meter at the same time.

## ESD resistance measuring in one step!

At the same time the environmental temperature and humidity data are storage to the resistance results!

Dimension	93 x 185 x 35 mm (SZ x H x M)
Weight	370g
Test voltage	10V, 100V, 500V Temperature and Humidity measuring
Resistance range	0 Ohm – 1 TOhm
Accuracy	$0 >> 10^9 \Omega \pm 10\%$ ; $10^9 >> 10^{12} \Omega \pm 20\%$
Electrode	2 darab szabványos 2,25 $\pm 0,25$ Kg
Data output	+5V
Display	Graphic 128 x 64 pixel, LED Backlight
Power	4 pcs 1,5 V AA accumulator
Usage	approx. 12-14 hours

Az AIJGO-61 Resistance meter can storage the measuring results. The results are possible to analyse on a PC.



ORDER CODE	TYPE
AIJGO-60	Walking Tester kit

ORDER CODE	TYPE
AIJGO-61	„All on One“ Resistance meter kit





### **D és Tsa. Bt.**

**Office and Warehouse:**

Galcsek utca 8-10.

HUNGARY, 2600 Vác

**Phone:** +36 27 502 555

**Email:** sales@destsa.hu

**Web:**

[www.dlb.hu](http://www.dlb.hu)

[www.destsa.hu](http://www.destsa.hu)